

SmartWeight® HN

High-capacity balancer with a simple interface



Key features at a glance

PATENTED

SmartWeight® technology



- ✓ Improves balance
- ✓ Minimizes weight usage
- ✓ Maximizes productivity

STANDARD

Intuitive interface



- ✓ Single-knob navigation simplifies experience
- ✓ 3D graphics

EXCLUSIVE

On-demand videos



- ✓ Simplifies training
- ✓ Improves results





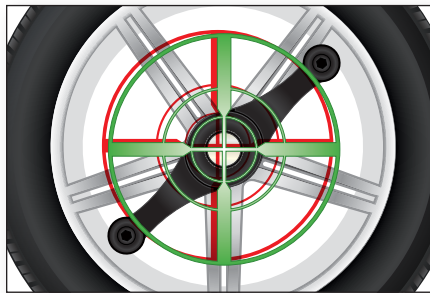
SWHN12 shown with optional BullsEye® collets and Hammerhead TDC assist



EXCLUSIVE

HammerHead® option

- ✓ Speeds clip-weight placement
- ✓ Improves balance
- ✓ Illuminates work area



PATENTED

CenteringCheck®

- ✓ Ensures proper centering
- ✓ Eliminates setup errors and most common cause of comebacks



STANDARD

Bottom-dead-center laser

- ✓ Speeds tape-weight placement
- ✓ Improves accuracy



EXCLUSIVE

Superior alloy shaft

- ✓ Most durable in industry
- ✓ Ensures accurate balancing for years to come

EXCLUSIVE

Single-knob interface simplifies experience

0.75oz

Clearly indicates correction weight amount



Rim cutaway displays selected weight mode

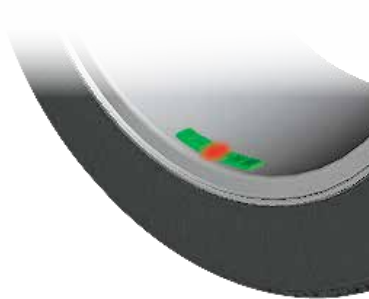


Switch text language

Balancing interface at a glance



Display rim dimensions



TruWeight® provides lifelike representations of actual correction weights



SmartWeight® panel displays wheel balance condition

Achieve the best balance with SmartWeight®

Save time & effort

- ✓ Single-weight solutions as much as **60% of the time**.
- ✓ Saves labor versus traditional two-weight solutions

Accommodate many wheel types

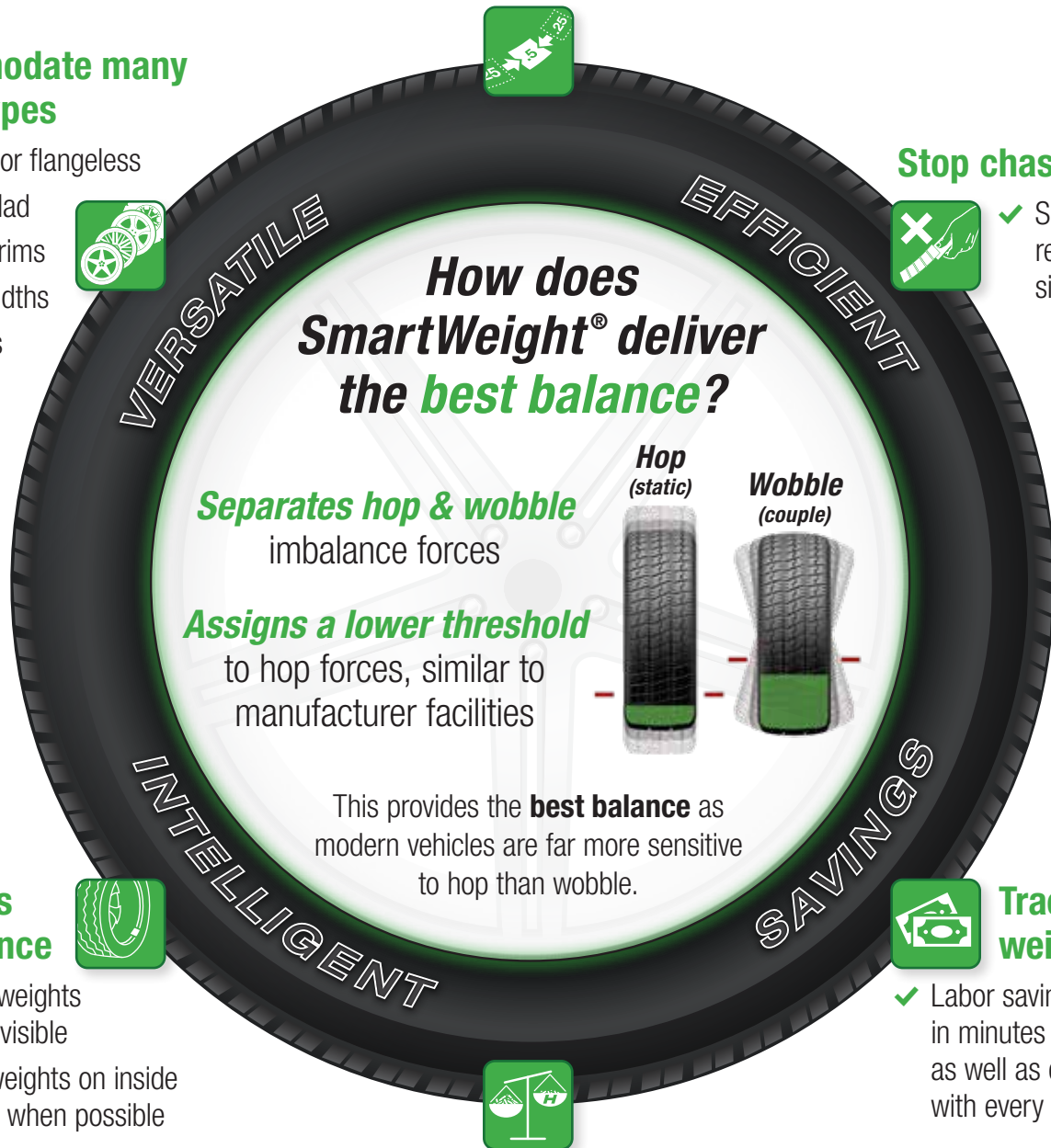
- ✓ Flanged or flangeless
- ✓ Plastic clad
- ✓ Colored rims
- ✓ Wider widths
- ✓ Run flats



Stop chasing weights



- ✓ Superior balance results in a single spin



Improves appearance



- ✓ Smaller weights are less visible
- ✓ Places weights on inside of wheel when possible



Track labor & weight savings

- ✓ Labor savings shown in minutes and hours as well as dollars with every spin.

Reduce weight usage

- ✓ **30% less weight used**
- ✓ Save money on every balance



Did you know?

Modern vehicles are approximately 4 times more sensitive to hop forces than wobble. Conventional balancers treat both the same.

Exclusive features make balancing faster and easier



On-screen instruction

- ✓ High-definition videos provide instruction on a variety of balancing topics
- ✓ Covers basic techniques and advanced procedures
- ✓ On-site training for your technicians
- ✓ Multiple languages



3D graphics

- ✓ Interactive display guides technicians through balancing procedures.
- ✓ Decreases training time



PATENTED

Automatic Mode Detection

- ✓ Eliminate the need to select the balance mode
- ✓ Reduce service time and possible mode entry errors
- ✓ No need to push buttons

Popular equipment upgrades



PATENTED

HammerHead® top-dead-center laser

- ✓ Greater weight placement accuracy to avoid mistakes
- ✓ More single-spin balances improve productivity
- ✓ Overhead fluorescent light illuminates work area



✗ Incorrect



✓ Correct



BullsEye® centering system

- ✓ Optimize centering
- ✓ Prevent wheel damage



Ergonomic QuickNut

- ✓ Fast clamping with collapsing jaws
- ✓ Comfort-grip handles



Wheel lift

- ✓ Avoid strain
- ✓ Safely service heavy, oversized wheels
- ✓ Aids wheel centering

Adjustable Flange Plate & Stud Kit

- ✓ Adjustable design with interchangeable pins protects wheel faces while providing quick setup and universal fitment
- ✓ Pins with compressible studs provide more accurate centering when clamping on uneven wheel lug seat surfaces



Specifications



SWHN13 shown

Power requirements

196–253V, 10 amp, 50/60 Hz, 1 ph
(Power cable includes: NEMA 20 amp plug, L6-20P)

Air supply requirements

100–175 psi (7–12 bar)*

Capacity

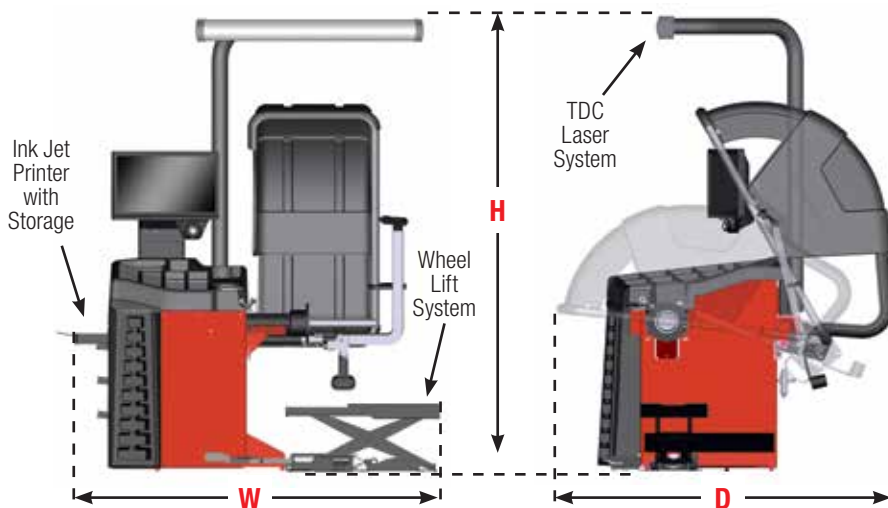
Rim width	1.5 – 20.5 in. (38 – 521 mm)**
Rim diameter	10 – 30 in. (254 – 762 mm)**
ALU	14 – 40 in. (356 – 1016 mm)**
Max. tire diameter	44 in. (1118 mm)
Max. tire width	20 in. (508 mm)
Max. tire weight	175 lbs. (79 kg)
Imbalance resolution	± 0.01 oz (0.28 g)
Placement accuracy	512 positions, ± 0.35°
Balancing speed	300 rpm
Motor	Programmable drive system and DC motor

* Wheel lift models only.

** Extreme wheel sizes may require manual data entry.

Models

	SWHN13	SWHN12	SWHN11	SWHN10	SWHN03	SWHN02	SWHN01	SWHN00
Wheel Lift System	✓	✓	✓	✓				
TDC Laser System	✓	✓			✓	✓		
Ink Jet Printer w/ Storage	✓		✓		✓		✓	
Width (W)	73 in 1854 mm	67 in 1702 mm	73 in 1854 mm	67 in 1702 mm	65 in 1651 mm	56.5 in 1435 mm	65 in 1651 mm	56.5 in 1435 mm
Height (H)	89 in 2261 mm	89 in 2261 mm	73 in 1854 mm	73 in 1854 mm	89 in 2261 mm	89 in 2261 mm	73 in 1854 mm	73 in 1854 mm
Depth (D)	62 in 1575 mm	62 in 1575 mm	62 in 1575 mm	62 in 1575 mm	62 in 1575 mm	62 in 1575 mm	62 in 1575 mm	62 in 1575 mm
Weight	683 lb 310 kg	630 lb 286 kg	633 lb 287 kg	580 lb 263 kg	582 lb 264 kg	529 lb 240 kg	532 lb 241 kg	479 lb 217 kg



Because of continuing technological advancements, specifications, models and options are subject to change without notice.



SmartWeight, BullsEye, HammerHead, CenteringCheck and TruWeight are registered trademarks of Hunter Engineering Company.

HUNTER

Engineering Company

www.hunter.com