



US007191651B2

(12) **United States Patent**
Douglas et al.

(10) **Patent No.:** **US 7,191,651 B2**
(45) **Date of Patent:** **Mar. 20, 2007**

(54) **VEHICLE WHEEL BALANCER SYSTEM WITH PROJECTION DISPLAY**

(75) Inventors: **Michael W. Douglas**, St. Charles, MO (US); **Nicholas J. Colarelli**, Creve Coeur, MO (US)

(73) Assignee: **Hunter Engineering Company**, Bridgeton, MO (US)

6,244,108	B1	6/2001	McInnes
6,484,574	B1	11/2002	Douglas et al.
6,535,281	B2	3/2003	Conheady et al.
2004/0050159	A1	3/2004	Corghi
2004/0051864	A1	3/2004	Braghiroli
2004/0083810	A1	5/2004	Racine
2005/0052657	A1	3/2005	Braghiroli
2005/0052658	A1	3/2005	Braghiroli
2005/0055153	A1	3/2005	Braghiroli
2006/0017885	A1*	1/2006	Tang 353/13

(*) Notice: Subject to any disclaimer, the term of this patent is extended or adjusted under 35 U.S.C. 154(b) by 63 days.

(21) Appl. No.: **10/928,941**

(22) Filed: **Aug. 27, 2004**

(65) **Prior Publication Data**

US 2006/0042380 A1 Mar. 2, 2006

(51) **Int. Cl.**

G01M 1/08 (2006.01)

(52) **U.S. Cl.** **73/462**; 353/13; 353/69

(58) **Field of Classification Search** **73/462**,
73/146; 353/13, 69, 70

See application file for complete search history.

(56) **References Cited**

U.S. PATENT DOCUMENTS

4,480,471	A	11/1984	Kogler et al.
5,054,918	A	10/1991	Downing et al.
5,189,912	A	3/1993	Quinlan et al.
5,827,964	A	10/1998	Douine et al.
5,915,274	A	6/1999	Douglas
6,122,957	A	9/2000	Bux et al.

OTHER PUBLICATIONS

"Definition of a Graphical User Interface," in Wiley Encyclopedia of Electrical and Electronics Engineering, 1999, John Wiley & Sons, Inc. (2 pages).*

"Products"—Laser Projection Display (LPD) from Symbol Technologies—Mar. 19, 2004—4 pages.

* cited by examiner

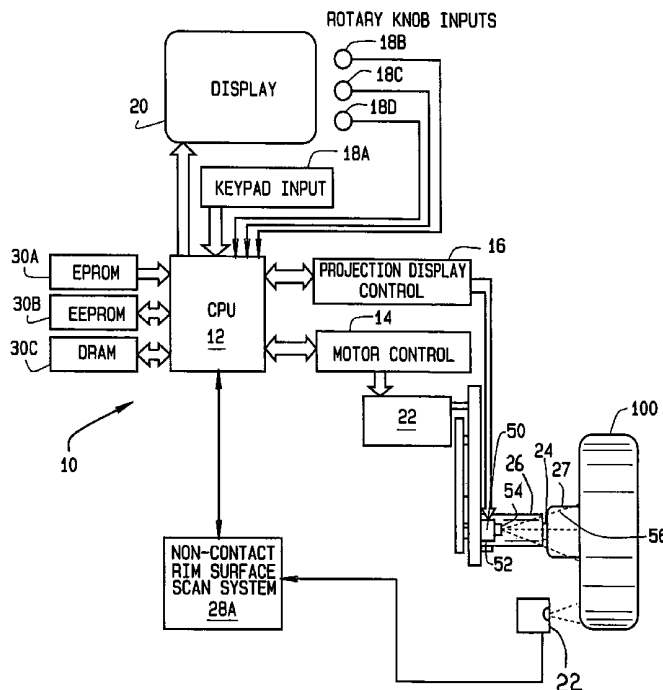
Primary Examiner—John E. Chapman

(74) *Attorney, Agent, or Firm*—Polster, Lieder, Woodruff & Lucchesi, L.C.

(57) **ABSTRACT**

A wheel balancer includes a microprocessor configured to receive data associated with a vehicle wheel rim and tire assembly imbalance from at least one sensor, and to identify optimal correction weight plane locations, as well as to present the operator with the imbalance correction weight arrangement. The microprocessor is further configured to control a projection display system disposed to project a two-dimensional image onto a surface of the vehicle wheel rim and tire assembly, to facilitate completion of an wheel imbalance correction procedure.

4 Claims, 9 Drawing Sheets



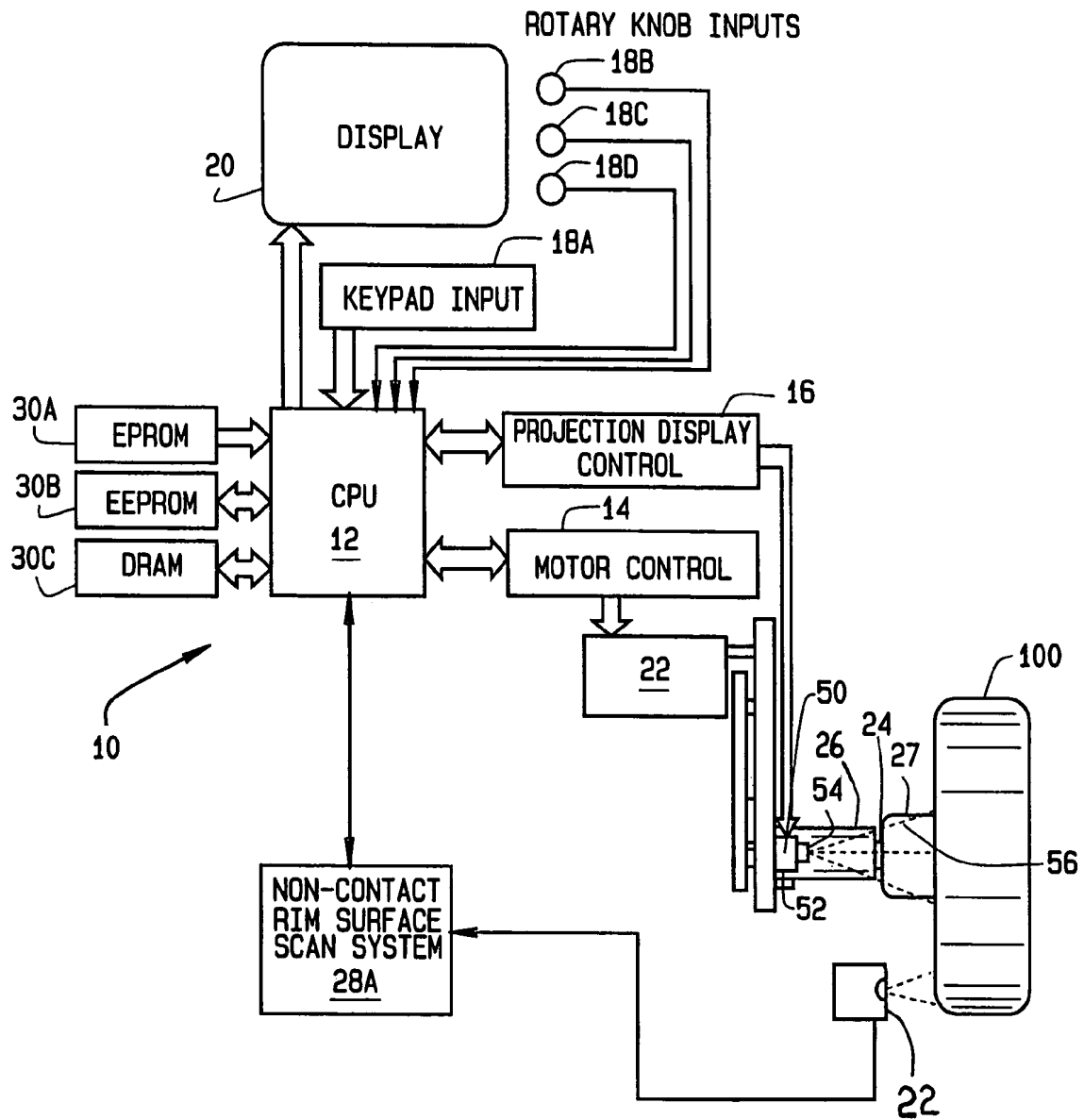


FIG. 1

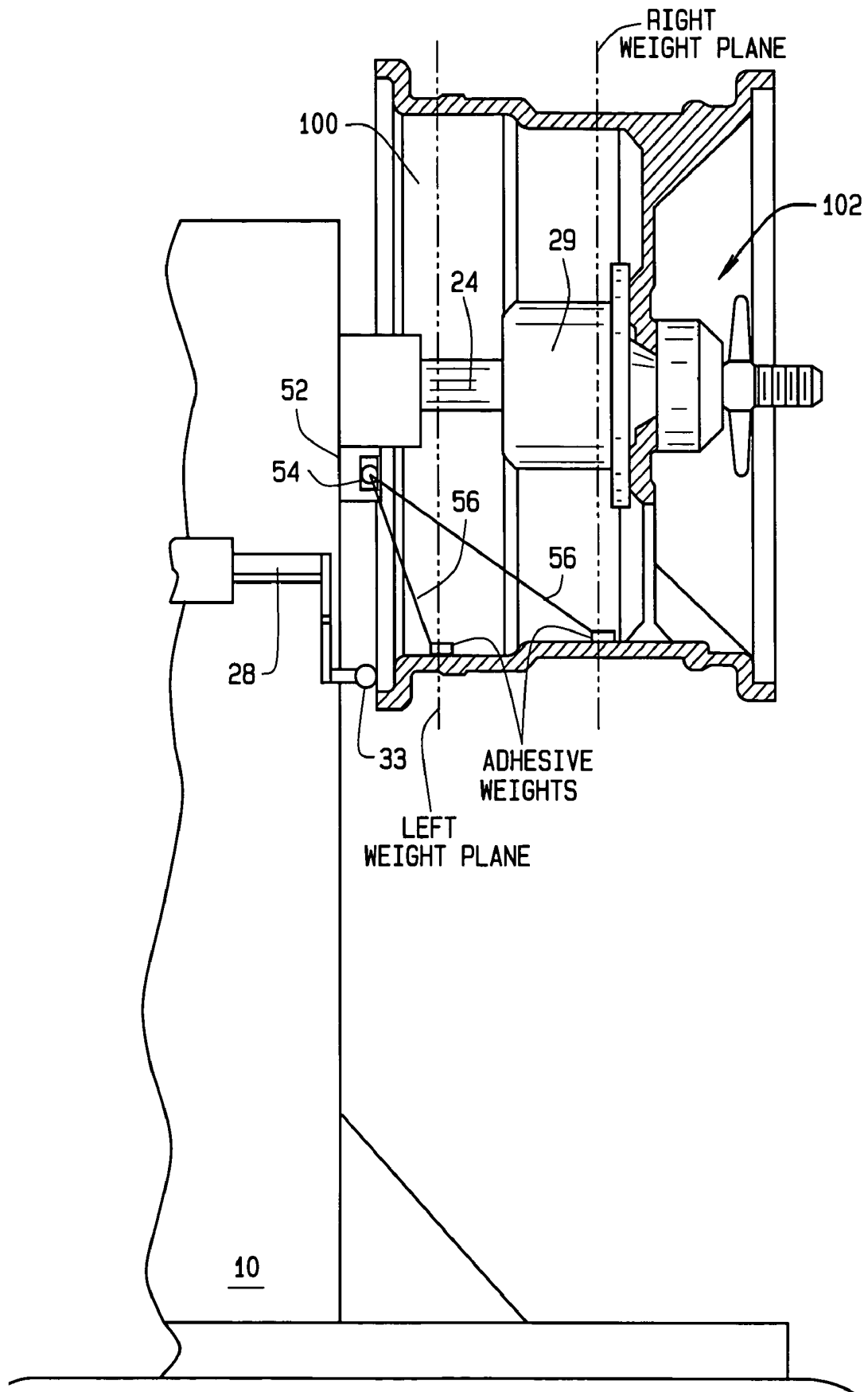


FIG. 2

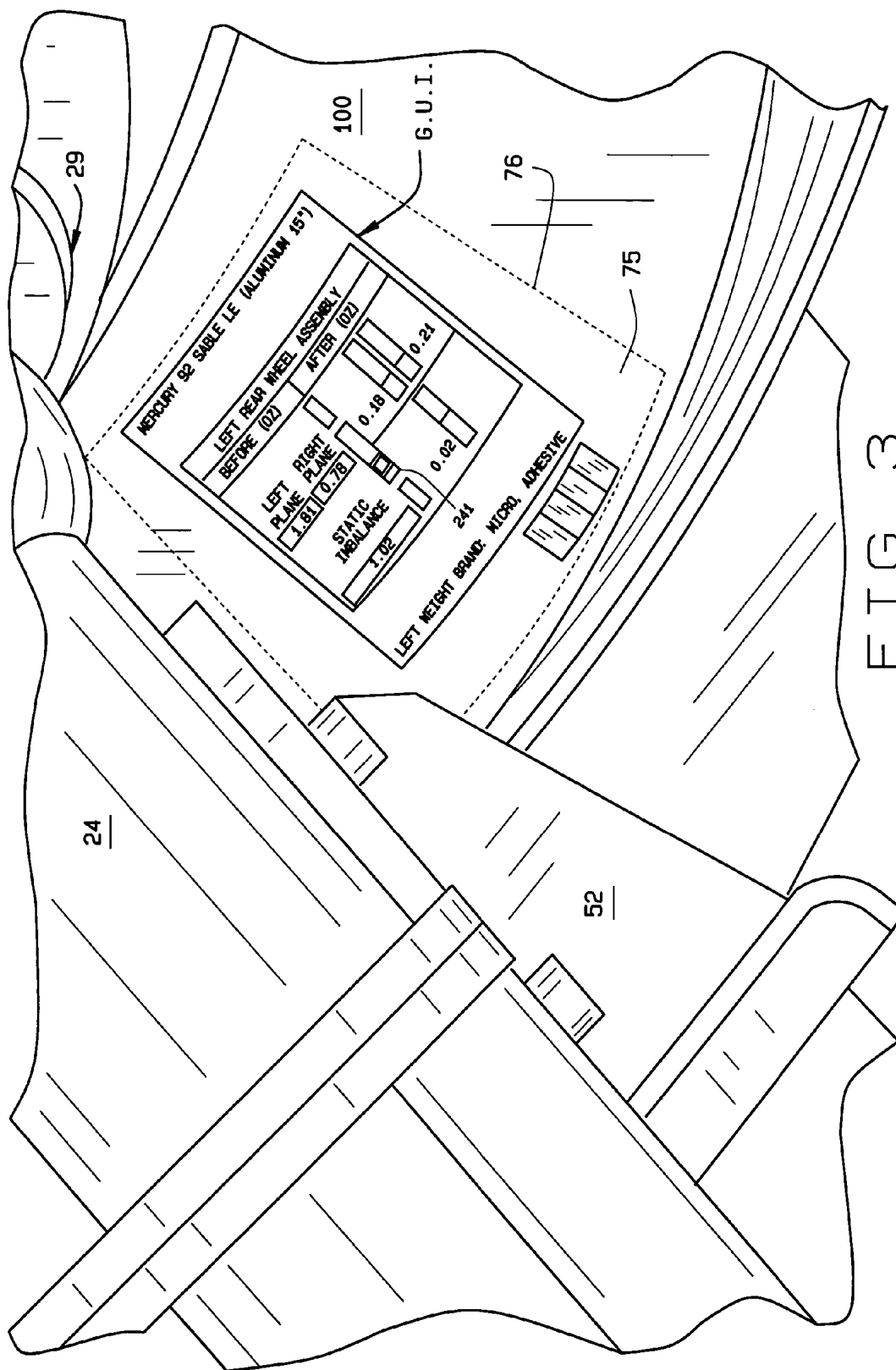


FIG. 3

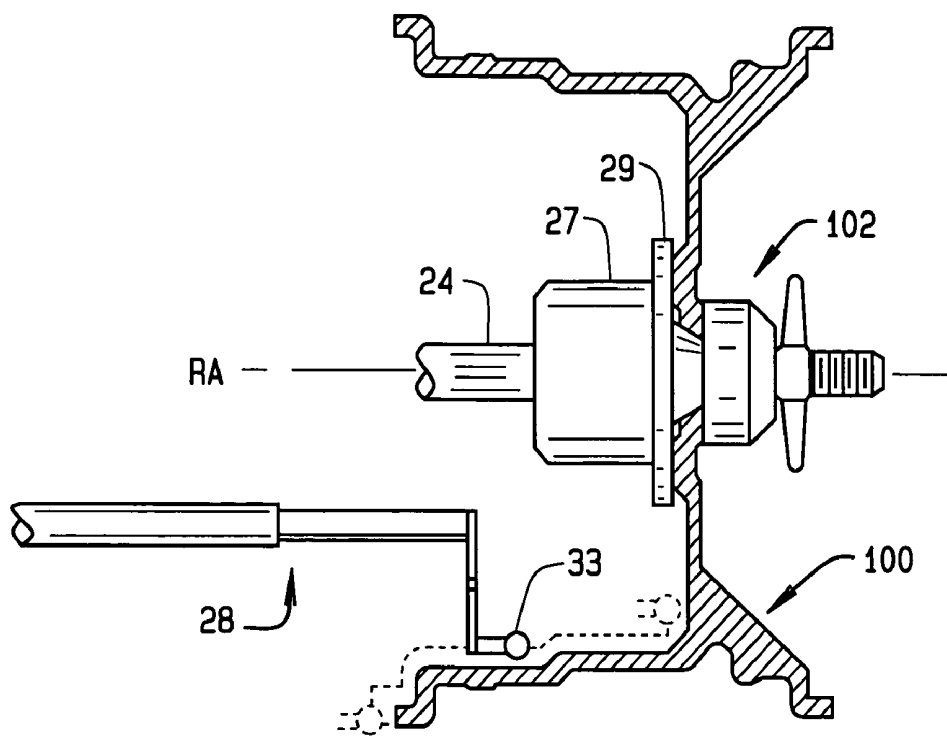


FIG. 4

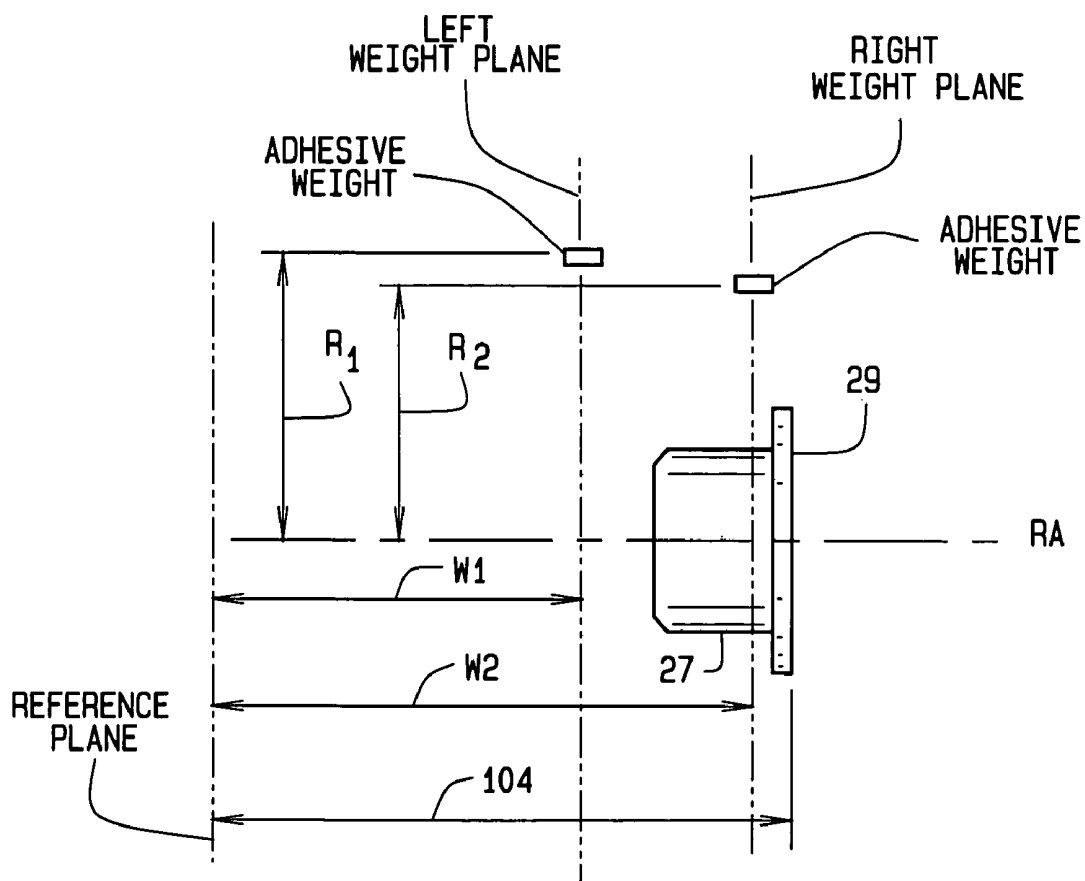


FIG. 7

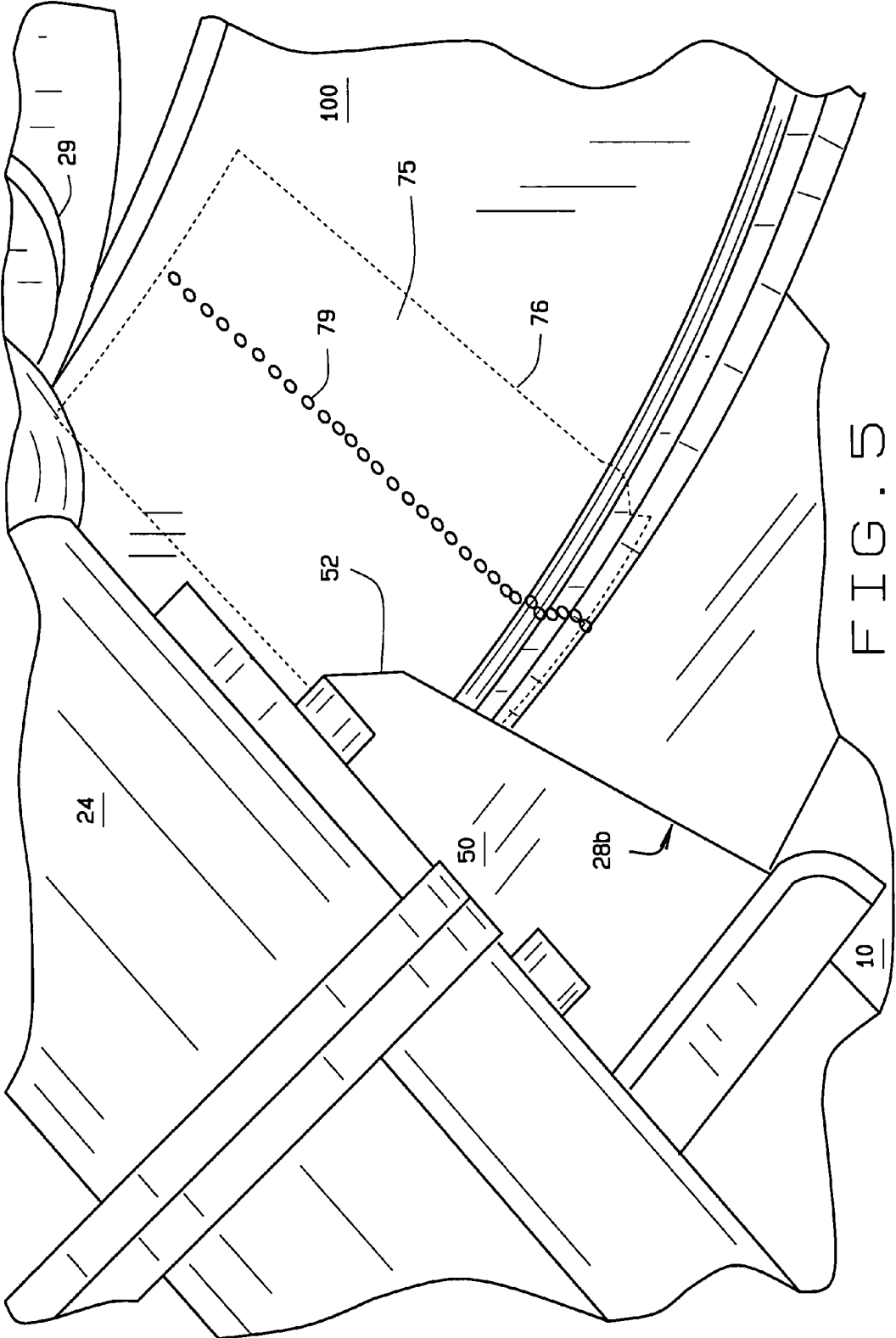


FIG. 5

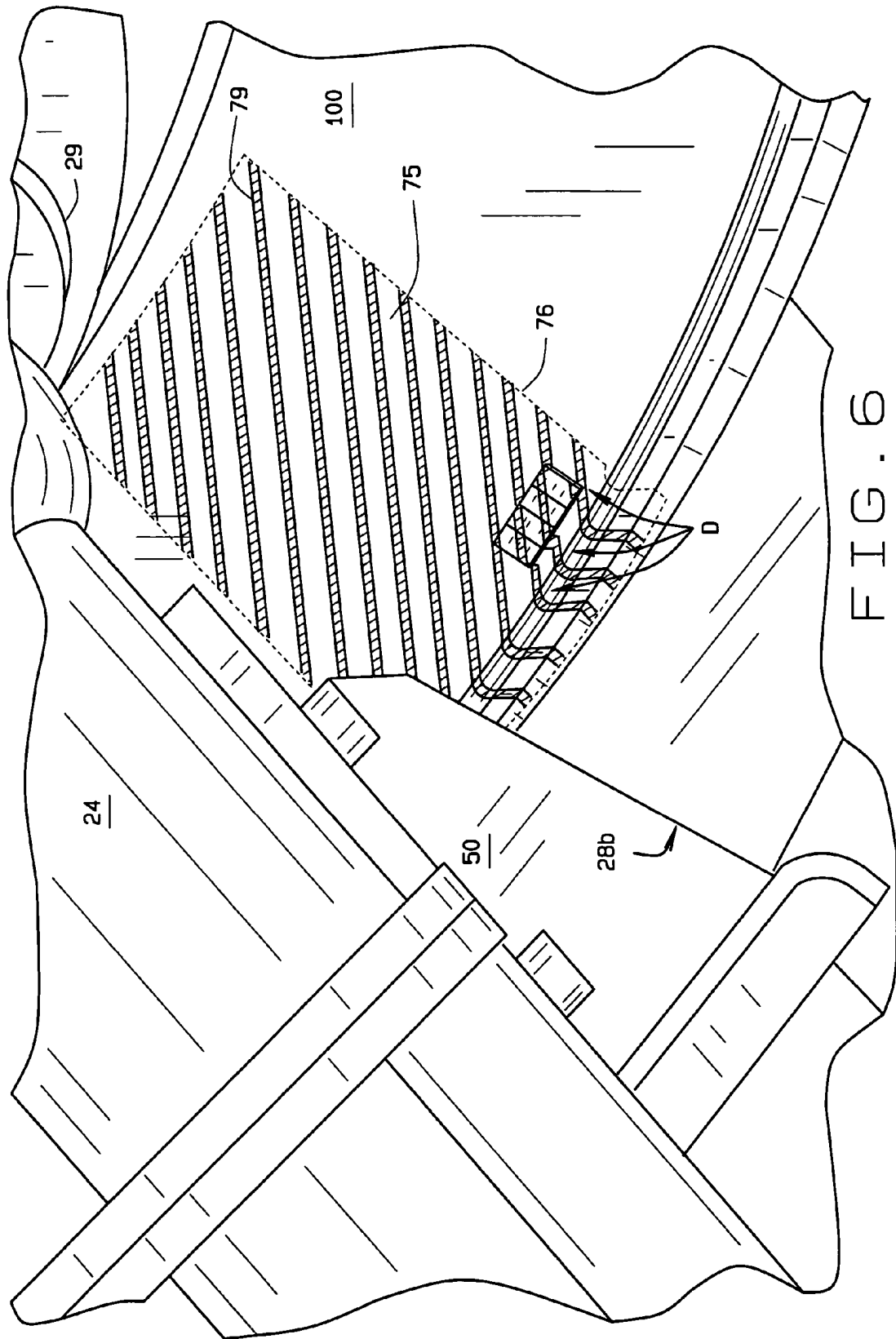
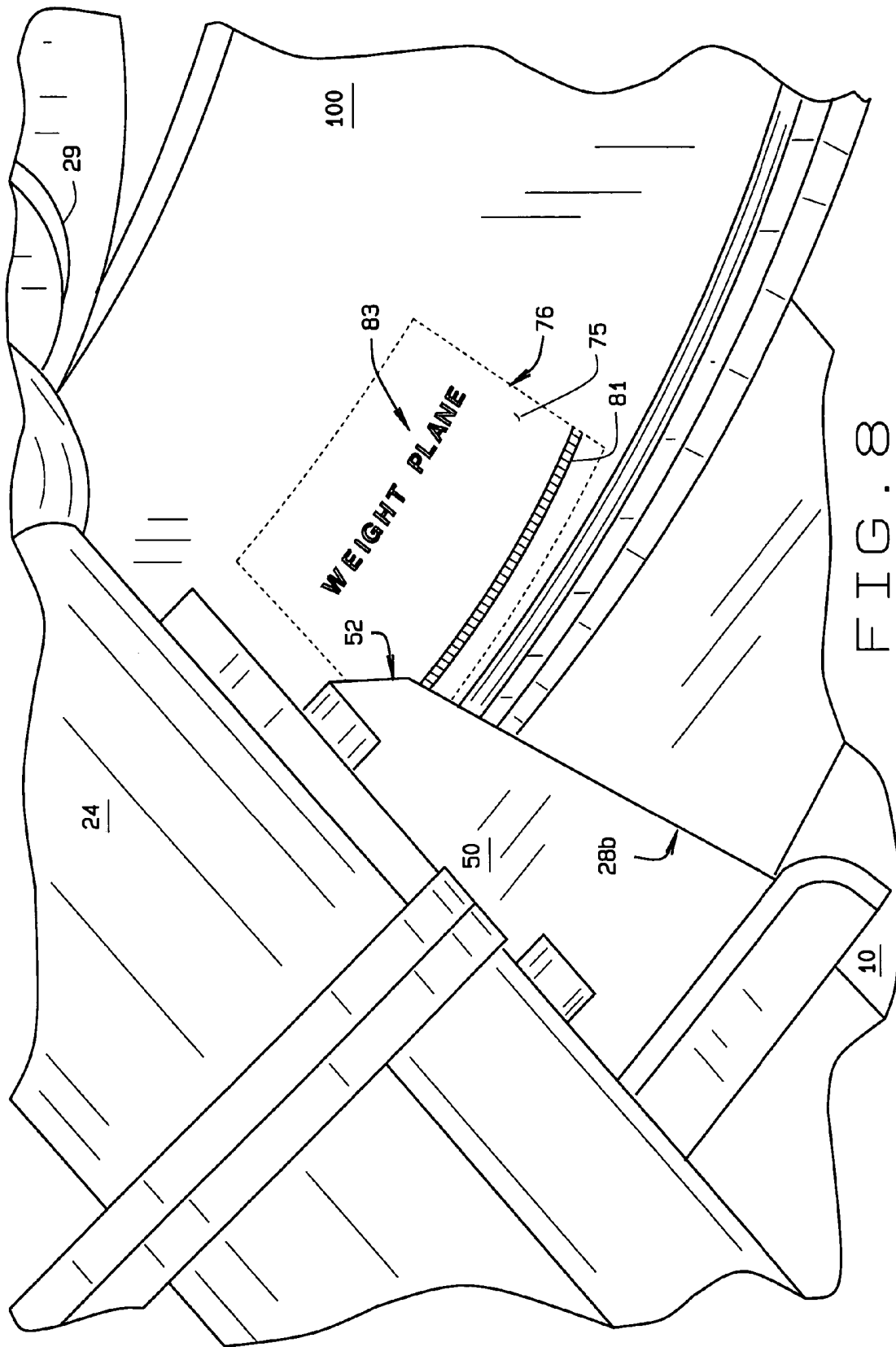
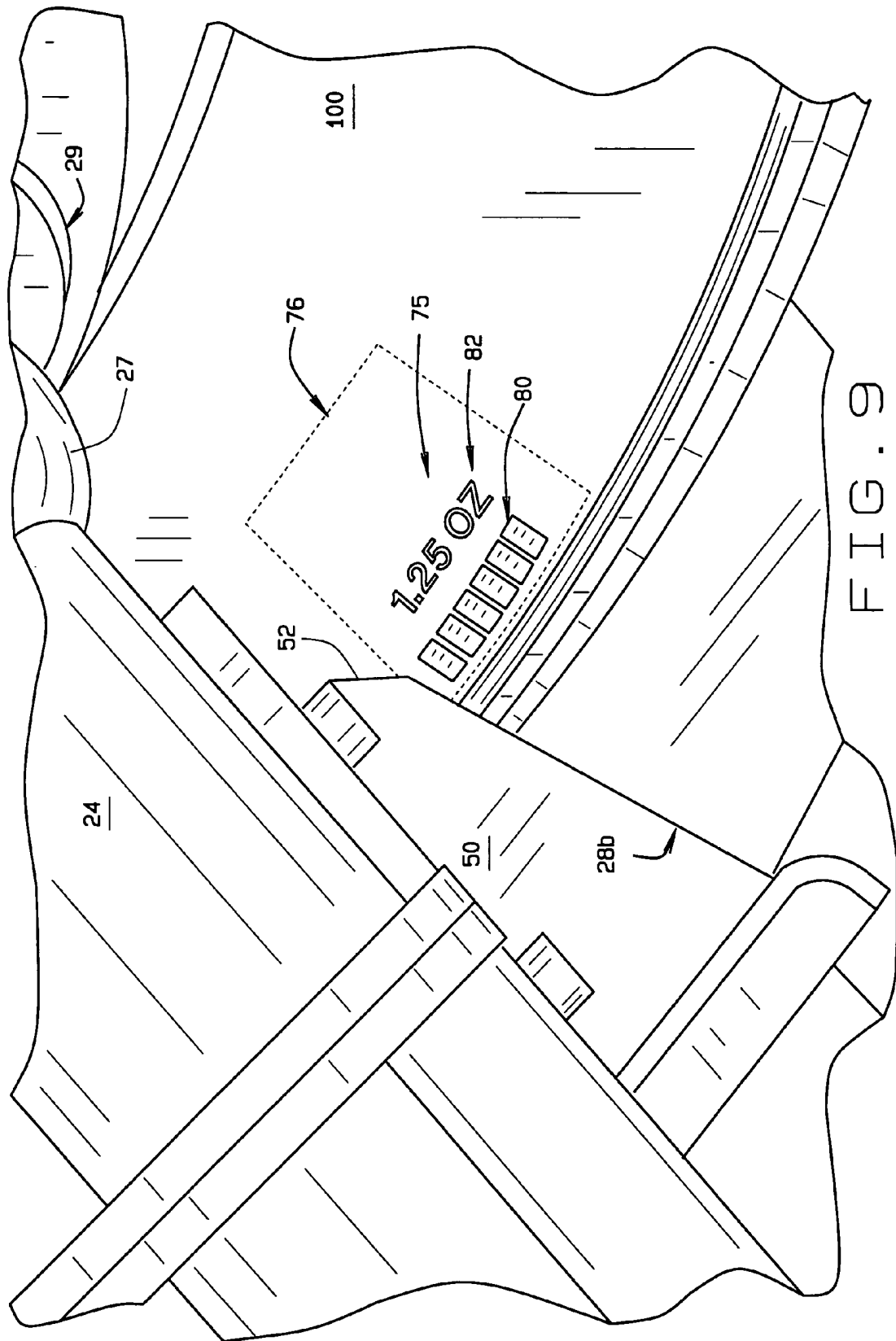


FIG. 6





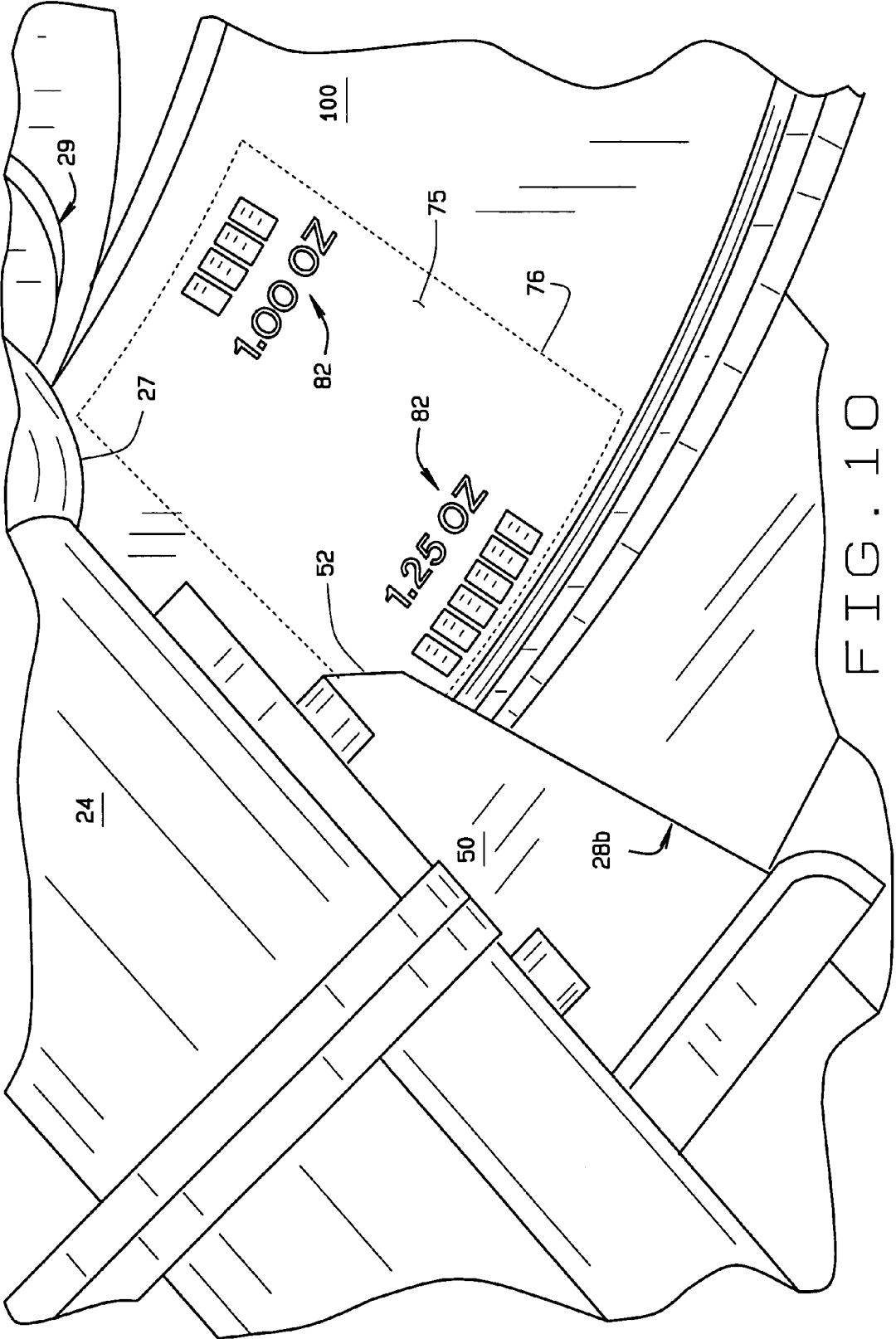


FIG. 10

VEHICLE WHEEL BALANCER SYSTEM WITH PROJECTION DISPLAY

CROSS-REFERENCE TO RELATED APPLICATIONS

Not Applicable.

STATEMENT REGARDING FEDERALLY SPONSORED RESEARCH

Not Applicable.

BACKGROUND OF THE INVENTION

The present invention relates to vehicle wheel balancer systems, and in particular, to a vehicle wheel balancer system configured to provide a projected display of information onto a surface of vehicle wheel rim to facilitate completion of a wheel imbalance measurement or correction procedure.

When balancing a vehicle wheel rim and tire assembly, which may consist of either a wheel rim by itself, or a wheel rim on which a tire has been mounted, several potential sources for operator error exist. First, there is a need to identify the proper correction planes on the wheel rim at which imbalance correction weights are to be placed. Second, the wheel rim and tire assembly must be correctly rotated to, and held in, a rotational position such that the operator can place an imbalance correction weight in the identified correction plane, and third, the operator must manually apply the imbalance correction weight to the wheel rim in the identified correction plane and at the proper rotational position.

The determination of unbalance in vehicle wheel rim and tire assemblies is carried out by an analysis of the phase and amplitude of the mechanical vibrations caused by the rotating unbalanced mass of the wheel rim and tire assembly. The mechanical vibrations are measured as motions, forces, or pressures by means of transducers, which convert the mechanical vibrations to electrical signals. The electrical signals are subsequently analyzed by a suitably programmed microprocessor. Each electrical signal is representative of a combination of fundamental oscillations caused by the rotating imbalance mass and noise.

It is well known in the art that a variety of types of imbalance correction weights are available for placing on a wheel rim to correct a measured imbalance. For example, adhesive-backed weights, patch balance weights, and hammer-on weights are available from a number of different manufacturers. Most wheel balancer systems are configured to assume that the wheel rim and tire assembly will be rotated to a particular rotational position (for example, disposing the desired weight correction position at the top—twelve o'clock—or bottom—six o'clock—rotational positions) during placement of an imbalance correction weight. This is generally not a problem, unless it would be more convenient to apply the weight with the wheel rim and tire assembly in a different rotational position, for example, the four or five o'clock rotational positions, when the operator is standing facing the surface of the wheel rim and tire assembly mounted on the wheel balancer system.

To compensate for a combination of static imbalance (where the heaviest part of the wheel rim and tire assembly will naturally tend towards a rotational position directly below the mounting shaft) and couple imbalance (where the rotating wheel rim and tire assembly exerts torsional vibra-

tions on the mounting shaft), at least two correction weights are typically required to be separated axially along the wheel rim surface, coincident with weight location or imbalance correction "planes". For imbalance correction weights of the "clip-on" style, the "left plane" comprises the left (innermost) rim lip circumference while the "right plane" comprises the right rim lip. If imbalance correction weights of the "adhesive" style are used, the imbalance correction planes can reside anywhere between the rim lips, barring physical obstruction such as wheel spokes, valve stems, welds, or regions of excessive wheel rim curvature.

With the wheel rim and tire assembly mounted to the wheel balancer system, a scan of the wheel rim inner surface profiles is optionally acquired, either with a mechanical contact system, such as is described in U.S. Pat. No. 6,484,574 B1 to Douglas et. al. or a non-contact measurement system, such as is described in U.S. Pat. No. 6,535,281 B2 to Conheady, et al.

Next, the imbalance correction planes are selected and the relative distances from a reference plane (usually the surface of the wheel mounting hub) to each of the imbalance correction planes is either conventionally measured either by manual measurement with a pull-out gauge or caliper, and manual input of the observed values through a keypad, potentiometer, or digital encoder, or by using an automatic electronic measuring apparatus which provides a direct measurement of the relative distance to the wheel balancer microprocessor. The radius of the wheel rim at which the weights will be placed must also be entered, again either manually, or by use of the electronic measuring apparatus.

Conventional wheel balancers can also employ a microprocessor configured to utilize the input weight plane information, together with variable weight amounts and variable radial placements, to identify proper locations for placement of the imbalance correction weights on the wheel rim, and to control rotation of the wheel rim and tire assembly. While utilization of such a balancer system facilitates the placement of an imbalance correction weight by placing the vehicle wheel rim and tire assembly in a preferred, or optimal rotational position for placement of the imbalance correction weight, it does not reduce other sources of operator error, such as the physical placement of an imbalance weight on the wheel, a poor selection of imbalance planes by the operator, or failure to compensate for the width of the imbalance weights during installation.

Automatic positioning of the wheel rim and tire assembly to a predetermined imbalance correction weight placement rotational position can be enhanced with the addition of a visual guide to the operator. U.S. Pat. No. 6,484,574 B1 to Douglas et al. combines a continuous laser projection guide with wheel balancer system including a direct current motor. The wheel balancer includes a shaft adapted for receiving a wheel rim and tire assembly, having a longitudinal axis and which is rotatable about the axis by a controllable motor, so as to rotate a wheel rim and tire assembly removably mounted thereon. A rotation sensor assembly is provided for measuring rotation of the shaft about its longitudinal axis and a vibration sensor assembly is operatively connected to the shaft for measuring vibrations resulting from imbalance in the wheel rim and tire assembly. A control circuit controls the application of power to the motor and determines from vibrations measured by the vibration sensor assembly, at least one weight placement position on the wheel rim and tire assembly to correct the vibrations. The control circuit is responsive to determination of an imbalance correction weight plane to project a laser projection onto the surface of the wheel rim at the selected imbalance correction plane.

The controller then rotates the wheel rim and tire assembly to bring the weight placement position to a predetermined rotational location coinciding with the laser projection in the imbalance correction weight plane, and to actively hold the wheel rim and tire assembly in that rotational location at which an imbalance correction weight is to be placed.

During a wheel balancing procedure, an operator must divide attention between information and instructions displayed on the console of the wheel balancer system and the laser projection on the surface of the wheel rim for imbalance correction weight placement. Accordingly, it would be advantageous to provide a vehicle wheel rim and tire balancer system with the ability to project a two-dimensional display of visual information onto the surface of a vehicle wheel rim to assist an operator in completing a vehicle wheel rim and tire balancing procedure.

It would be further advantageous to utilize a projected two-dimensional display on the surface of a vehicle wheel rim and tire assembly to facilitate non-contact measurements of a vehicle wheel rim and tire assembly surface profile through the projection and observation of a series of points, lines, or patterns on the surface of the vehicle wheel rim and tire assembly.

BRIEF SUMMARY OF THE INVENTION

Briefly stated, a wheel balancer of the present invention includes a microprocessor configured to receive data associated with a vehicle wheel rim and tire assembly from at least one sensor, and to identify optimal correction weight plane locations, as well as to present the operator with the imbalance correction weight arrangement. The microprocessor is further configured to control a projection display system disposed to project a two-dimensional bit-mapped image of information onto a surface of the vehicle wheel rim, to facilitate completion of an wheel imbalance correction procedure.

A method of the present invention to facilitate completion of a wheel imbalance correction procedure requires the steps of mounting a wheel rim and tire assembly onto a balancer. Once mounted, an imbalance measurement of the wheel rim and tire assembly is obtained, and imbalance correction weight placement planes and imbalance correction weight placement rotational positions are identified. A two-dimensional bit-mapped image of information selected to facilitate installation of an imbalance correction weight is projected onto a surface of the wheel rim and tire assembly.

An alternate method of the present invention to facilitate completion of a wheel imbalance correction procedure includes the steps of mounting a wheel rim and tire assembly onto a balancer. Once mounted, a two-dimensional bit-mapped image of a graphical user interface is projected onto a surface of the wheel rim and tire assembly, providing operator information and instructions. An imbalance measurement of the wheel rim and tire assembly is obtained, and with the imbalance measurement, associated imbalance correction weight placement planes and imbalance correction weight placement rotational positions are identified.

An alternate method of the present invention to facilitate completion of a wheel imbalance correction procedure includes the initial step of mounting a wheel rim and tire assembly onto a balancer. A two-dimensional image is projected onto a surface of the wheel rim and tire assembly, and one or more images of the two-dimensional image are acquired. At least one parameter of the wheel rim and tire assembly is determined from the acquired images.

An alternate method of the present invention to facilitate completion of a wheel imbalance correction procedure includes the initial step of mounting a wheel rim and tire assembly onto a balancer. A two-dimensional image having a predetermined configuration is projected onto a surface of the wheel rim and tire assembly, and one or more images of the two-dimensional image, distorted from the predetermined configuration by a profile of the surface of the wheel rim and tire assembly are acquired. The distortions from the predetermined configuration in the acquired images are measured, and a representation of the profile of the of the wheel rim and tire assembly is determined there from.

The foregoing and other objects, features, and advantages of the invention as well as presently preferred embodiments thereof will become more apparent from the reading of the following description in connection with the accompanying drawings.

BRIEF DESCRIPTION OF THE SEVERAL VIEWS OF THE DRAWINGS

In the accompanying drawings which form part of the specification:

FIG. 1 is a combination diagrammatic plan view, block function diagram of a wheel balancer of the present invention system;

FIG. 2 is a combination cross section, diagrammatic illustration showing how the projection display of the present invention projects a bit-mapped image onto a surface of the vehicle wheel rim;

FIG. 3 is a perspective view of a graphical user interface projected onto a surface of a wheel rim and tire assembly;

FIG. 4 is a combination cross section, diagrammatic illustration showing a typical wheel rim mounted on a wheel balancer with a conventional rim measuring apparatus;

FIG. 5 is a perspective view of a sequence of illuminated pixels projected onto a surface of a wheel rim and tire assembly along a common line;

FIG. 6 is a perspective view of a two-dimensional pattern projected onto a surface of a wheel rim and tire assembly;

FIG. 7 illustrates the geometric relationships between imbalance correction weight locations residing on weight correction planes;

FIG. 8 is a perspective view of a two-dimensional image including text projected on a surface of a wheel rim and tire assembly to illustrate a weight placement plane;

FIG. 9 is a perspective view of a two-dimensional image of an imbalance correction weight and associated alphanumeric data projected onto a surface of a wheel rim and tire assembly at an imbalance correction weight placement location; and

FIG. 10 is a perspective view of a two-dimensional image of a pair of imbalance correction weights and associated alphanumeric data projected onto a surface of a wheel rim and tire assembly at an imbalance correction weight placement location.

Corresponding reference numerals indicate corresponding parts throughout the several figures of the drawings.

DESCRIPTION OF THE PREFERRED EMBODIMENT

The following detailed description illustrates the invention by way of example and not by way of limitation. The description clearly enables one skilled in the art to make and use the invention, describes several embodiments, adapta-

tions, variations, alternatives, and uses of the invention, including what is presently believed to be the best mode of carrying out the invention.

Turning to FIG. 1, the components of a vehicle wheel balancer 10 of the present invention are generally shown. The balancer 10 includes a microprocessor 12 having sufficient processing capability for a vehicle wheel balancer application, which is operatively coupled to a motor controller 14, a projection display controller 16, one or more operator input devices 18A–18D, and a display device 20.

A motor 22, controlled by the motor controller 14 drives a rotating spindle 24, upon which a vehicle wheel rim and tire assembly 100 is removably mounted for measuring imbalance. The rotating spindle 24 is supported by a support structure 26, to which conventional rotational position sensors and force transducers are operatively coupled to measure forces representative of an imbalance present in a rotating vehicle wheel rim and tire assembly 100 mounted to a hub 27 on the spindle 24. These rotational position sensors and force transducers, together with corresponding interface circuitry to the microprocessor 12, are well known in the balancer art, and thus are not shown. The microprocessor 12 is further coupled to a rim measuring component 28, and to one or more electronic memory devices, such as an EPROM 30A, EEPROM 30B, or RAM 30C.

The projection display control 16 is configured to control the operation of a projection display system, preferably a digital laser projection display system 50, but which may alternatively consist of a rear projection LCD system, digital light projection display, or any other projection display system capable of controllably projecting a two-dimensional image onto a surface. The laser projection system 50 is preferably housed in a self-contained projector housing 52, and includes at least one conventional laser emitter 54 positioned to project a beam of laser light 56, visible to a detector, towards a surface of the wheel rim and tire assembly 100 mounted on the spindle 24.

As best seen in FIG. 2, the laser emitter 54 is mounted within the housing 52 such that a projected laser beam 56 intersects the inner surface of the wheel rim and tire assembly 100, generating at least one visible point of light. Included within the housing 52 is a laser beam deflection system, preferably consisting of two or more micro-mirrors. A first micro-mirror is configured to deflect the laser beam 56 in a controlled fashion along a first axis in a plane, while the second micro-mirror is configured to deflect the laser beam 56 along a second axis, perpendicular to the first axis. Through selective control of the two or more micro-mirrors, the laser beam 56 is controlled to project points of light, or illuminated pixels, at discrete locations within a two-dimensional area on the surface of the vehicle wheel rim and tire assembly 100. These points of light, or illuminated pixels are disposed within the boundaries of a field of projection of the projection display system, and collectively define a bit-mapped image projected onto the surface of the wheel rim and tire assembly 100. The bit-mapped image may include alphanumeric data, graphical data, or other visual displays configured to assist an operator in carrying out an operation of the vehicle wheel balancer 10.

Throughout the present description, the term “bit-mapped image” will be understood to refer to a projected image 75 composed of an arrangement of discrete points or pixels, some of which may be illuminated, and some of which may be dark. A “bit-mapped image” as used herein is not intended as a reference to a manner or format in which data is stored in an electronic memory. Those of ordinary skill in the art will recognize that although an image is composed of

discrete points or pixels, as projected onto a surface, it may appear to a human observer as if the discrete points or pixels are continuous, due to an inability of the human observer to visually distinguish spaces or gaps separating each discrete point or pixel.

Activation of the laser emitter 54, as well as positional control of the point of intersection of the laser beam 56 with the vehicle wheel rim and tire assembly 100 is selectively controlled by the projection display control 16. Selective activation of the laser emitter 54 combined with controlled deflection of the laser beam 56 enables the projection display control 16 to project a bit-mapped image 75 onto a surface of the vehicle wheel rim and tire assembly 100 using the laser emitter 54. Individual pixels comprising the bit-mapped image 75 within the field of projection 76 are defined by discrete points of visible light projected by the laser beam 56 as well as discrete “spaces” intentionally left un-illuminated or dark by the laser beam 56.

Controlled variation in an activation period of the laser emitter 54 for each illuminated pixel location provides two or more levels of grey-scale equivalent resolution for each illuminated pixel location. Preferably, the laser projection display system 50 is capable of projecting a bit-mapped image 75 in a field of projection 76 having a resolution of at least 640 pixels by 480 pixels, and a grey-scale equivalent resolution of at least 16 levels, corresponding to a VGA standard display. A suitable laser projection display system 50 is manufactured by Symbol Technologies, Inc. of Oakland, Calif., and sold under the name Symbol Laser Projection Display.

In an alternative embodiment, the laser projection display system 50 is configured with multiple laser emitters 54, each projecting a laser beam 56 of a different color in the visible light spectrum, for example, a red laser beam, a green laser beam, and a blue laser beam, thereby enabling the laser projection display system 50 to project a multi-color two-dimensional bit-mapped image 75 onto the surface of a vehicle wheel rim and tire assembly 100.

Multiple colors may be utilized to facilitate imbalance correction procedures by providing the operator with simple visual representations of imbalance levels, for example, providing a green icon to indicate to an operator that the wheel rim and tire assembly 100 measured imbalance meets a predetermined tolerance level, or a red border or region to indicate to an operator one or more detected features on the wheel rim and tire assembly 100 surface which may interfere with the placement of an imbalance correction weight. Images of bar graphs presented to the operator on the surface of the wheel rim and tire assembly 100 may be provided with colored regions representative of different degrees of tolerance, and/or may change colors corresponding to adjustments made by an operator.

Similarly, a graphical user interface (GUI) projected onto a surface of the wheel rim and tire assembly 100, as shown in FIG. 3, may be presented to the operator in a multi-color configuration, appearing similar to a corresponding GUI presented on a conventional display 20.

Control of the laser projection display system 50 by the microprocessor 12 to alter a projected image 75 is optionally responsive to one or more events during the operation of the vehicle wheel balancer 10. For example, the microprocessor 12 may be responsive to operator input to direct the later projection display system 50 to alter the projected image 75, i.e., upon the operator selecting an imbalance correction weight placement plane or altering an imbalance correction weight placement rotational position. Alternatively, the projected image 75 may be altered responsive to a parameter of

a measured imbalance of a wheel rim and tire assembly 100, or the current rotational position of the wheel rim and tire assembly 100.

Operation of the vehicle wheel balancer 10 of the present invention is next described with reference to FIG. 4. The first step in balancing the wheel rim and tire assembly 100, i.e., mounting the wheel rim and tire assembly onto the spindle 24, is conventional and well known to those of ordinary skill in the wheel balancer field, and is not described herein in detail.

Typically, the second step requires inputting the wheel rim and tire assembly 100 profile utilizing a conventional mechanical rim measuring component 28 is described in general with reference to FIG. 4. A typical wheel rim is shown mounted with conventional mounting hardware 102, clamped against the face plate 29 of the mounting hub 27. The rim measuring apparatus 28 is mounted as close to the spindle 24 centerline RA as possible while still allowing the apparatus 28 to clear the mounting hub face plate 29. To scan the wheel profile the operator first extends and positions a pointer ball 33 to the farthest distance as physically possible. The microprocessor 12 recognizes the extension of the pointer ball 33 as a desire to initiate a scan, transmits a confirmation signal, and waits for the apparatus 28 to be held steady. After the apparatus 28 is held steady for approximately one second, a configuration is signaled to the operator to begin the scan. The pointer ball 33 is dragged along the wheel rim surface, following the contour. The microprocessor 12 acquires periodic sets of signals corresponding to wheel rim diameters and distances from sensors associated with the apparatus 28. The pointer ball 33 is dragged all the way to the point where the pointer ball 33 contacts the tire or rim edge, at which point the ball 33 is again held steady and the microprocessor 12 responds with a confirmation signal that the scan is finished, storing sets of distances and diameters, and the apparatus 28 can be returned to the storage position.

A conventional right plane measuring apparatus (not shown) capable of reaching the right side of the wheel rim may optionally be provided with the present invention. The surfaces suitable for adhesive weights and the right rim location may be scanned in the same manner as the left side of the wheel rim 100, to provide a complete wheel rim profile.

In an alternate embodiment, the conventional mechanical rim measuring apparatus 28 may be replaced by a non-contact rim measuring apparatus 28A including at least one sensor 28B configured to acquire light reflected from a surface of the vehicle wheel rim and tire assembly 100, from which the microprocessor 12 can calculate a wheel rim profile. The sensor 28B may be incorporated into the same housing or assembly as the projection display system 50.

For example, as shown in FIG. 5, the projection display system 50 may be controlled to project a sequence of illuminated pixels 77 on a common line onto a surface of the wheel rim and tire assembly 100. The illuminated pixels 77 are observed by the sensor 28B. Using triangulation or any other conventional range-finding techniques, a distance from the sensor 28B to each illuminated pixel may be determined, and from the set of determined distances, a representation of the wheel rim and tire assembly profile along the common line is generated. Those of ordinary skill in the art will recognize that the illuminated pixels 77 may be illuminated one at a time, in a series of projected images 75, or may be illuminated simultaneously in a single projected image 75.

In an alternative embodiment, shown in FIG. 6, the projection display system 50 is configured to project a

two-dimensional image 75 having predetermined characteristics onto the surface of the wheel rim and tire assembly 100. The predetermined characteristics may include, for example, a collection of discrete points 77, a series of lines 79, or regular geometric patterns. An image of the projected image is acquired by the sensor 28B, and evaluated by the microprocessor 12 to identify distortions D in the acquired image of the predetermined characteristics. These distortions D of the predetermined characteristics are imparted on the projected image by surface features of the wheel rim and tire assembly 100. Using conventional image processing and manipulation algorithms, a mathematical representation of the surface onto which the predetermined characters were projected is calculated from the identified distortions D, thereby obtaining a representation of the wheel rim and tire assembly profile for the region onto which the two-dimensional image is projected.

FIG. 7 shows an exemplary weight plane arrangement that could be obtained from a distance and diameter data set acquired during a wheel scanning step. The plane locations are simply distances from a fixed reference plane known to the wheel balancer system 10. Typically, the reference plane is an imaginary fixed offset 104 from the face 29 of the mounting hub 27, which yields a positive values along any measurable point reachable by the measuring apparatus 28. With a particular measured static and couple imbalance obtained from a measurement spin of the wheel rim and tire assembly 100, and with a particular set weight plane locations W1, W2 and corresponding radii R1, R2, the balancer microprocessor 12 determines the required imbalance correction weight amount and radial placement angle for an imbalance correction weight in each weight plane W1, W2 using conventional algorithms well known to those of ordinary skill in the wheel balancer field. A full explanation of the algorithms employed during this weight calculation may be found in U.S. Pat. No. 5,396,436 to Parker et al., herein incorporated by reference. As shown in FIG. 8, once determined, a weight plane W1 or W2 may be illuminated on the surface of the wheel rim and tire assembly 100 by a line 81 and identifying indicia 83 in a projected image 75.

In an alternative embodiment, the projection display system 50 is configured to project a two-dimensional image having predetermined characteristics, such as previously described in connection with FIG. 6, onto the surface of the wheel rim and tire assembly 100 as the wheel rim and tire assembly 100 is rotated through one or more complete revolutions about the axis of the spindle 24. The projected image is observed by the sensor 28B during the rotation, either continuously, or in a series of discrete acquired images, from which changes in the predetermined characteristics during the rotation of the wheel rim and tire assembly 100 can be identified. Preferably, these changes are indexed to the rotational position of the wheel rim and tire assembly 100. From the observed changes and the associated rotational positions of the wheel rim and tire assembly 100, the microprocessor 12 is configured to generate a representation of runout of the surface of the wheel rim and tire assembly 100 onto which the projection display system 50 is projecting the two-dimensional image.

At any point during a vehicle wheel imbalance measurement procedure at which information is required to be displayed to an operator, the microprocessor 12 is configured to optionally direct the projection display control 16 to project a two-dimensional bit-mapped image 75 onto a surface of the wheel rim 100 using the laser projection display system 50. Since the laser projection display system 50 is preferably capable of projecting a two-dimensional

bit-mapped image **75** having a field of projection **76** with a resolution of at least 640 pixels by 480 pixels, and an equivalent grey-scale resolution of at least 16 levels, corresponding to a VGA standard display, information optionally presented to an operator on a conventional CRT or LCD display device **20**, such as text, graphics, or a graphical user interface (GUI) may be projected onto a surface of the vehicle wheel rim and tire assembly **100**.

Those of ordinary skill in the art will recognize that during a vehicle wheel imbalance correction procedure, a large amount of the information presented to an operator is directly associated with a vehicle wheel rim and tire assembly **100**, often requiring the operator to obtain the information from a conventional display **20** disposed apart from the vehicle wheel rim and tire assembly **100**, and to then perform an action associated with the vehicle wheel rim and tire assembly **100**, while looking away from the conventional display **20**. Utilizing the laser projection display system **50** of the present invention, the microprocessor **12** is configured to present the operator with the information in the form of a two-dimensional bit-mapped image **75** directly on a surface of the wheel rim and tire assembly **100**, eliminating the need for the operator to switch a focus of attention between a conventional display **20** and the wheel rim and tire assembly **100**.

For example, to indicate a placement location for one or more imbalance correction weights on the surface of the vehicle wheel rim and tire assembly **100**, the microprocessor **12** may be configured to utilize the laser projection display system **50** to project a full-scale bit-mapped image **75** of each imbalance correction weight **80** onto the surface of the wheel rim **100** at the selected imbalance correction plane **W1** or **W2**, together with optional textual data **82** identifying the specific size or amount of the imbalance correction weights **80**, as shown in FIGS. **9** and **10**. Those of ordinary skill in the art will readily recognize that bit-mapped images of multiple imbalance correction weights (FIG. **10**) will only be displayed in situations where the placement locations for the imbalance correction weights **80** both lie within the field of projection **76** of the two-dimensional bit-mapped image **75**, and that imbalance correction weight placement locations which lie outside the area on the wheel rim surface covered by the projected bit-mapped image **75** will not be shown simultaneously.

For vehicle wheel balancer systems **10** which do not provide automatic rotational indexing of the vehicle wheel rim and tire assembly **100** to a weight placement rotational position, the textual data **82** may optionally include a directional arrow and/or a rotational angle measurement directing the operator to manually rotate the wheel rim and tire assembly **100** to the selected weight placement rotational position. The microprocessor **12** is optionally configured to update the textual data **82** presented in the bit-mapped image **75** as the operator rotates the wheel, for example, providing a "live" rotational angle measurement, or providing a "stop" indication to an operator when the wheel rim and tire assembly **100** is in the correct rotational position for placement of an imbalance correction weight, at which point an image of the imbalance correction weight may be provided on the bit-mapped image **75**, at the proper placement position.

Alternatively, the microprocessor **12** may be configured to track the current rotational position of the wheel rim and tire assembly **100**, and to project an image of the imbalance correction weight onto the surface of the wheel rim and tire assembly **100**, such as shown in FIGS. **9** and **10**, at any time during which an identified imbalance correct weight place-

ment rotational position is rotated to within the field of projection **76** of the two-dimensional bit-mapped image **75**. As the identified imbalance correct weight placement rotational position is rotated through the field of projection **76**, the image of the imbalance correction weight, assumed to occupy less than the full field of projection **76**, is shifted within the field of projection **76** to correspond to the rotational location of the identified imbalance correction weight placement rotational position, thereby allowing an operator a degree of "slack" in placing the wheel rim and tire assembly **100** at a predetermined rotational position prior to installation of an imbalance correction weight. Optionally, the wheel rim and tire assembly **100** is not required to be locked or braked in a fixed rotational position for the placement of the imbalance correction weight.

Utilizing known and measured parameters of the vehicle wheel balancer system **10** and the wheel rim and tire assembly **100**, the bit-mapped images **75** projected by the laser projection display system **50** may be optionally manipulated or adjusted prior to projection to compensate for known distortions **D** in the projected bit-mapped image **75** caused by displacement of, and curvature of, the vehicle wheel rim surfaces onto which the bit-mapped image **75** is projected. The resulting images **75** projected onto the surface of the wheel rim and tire assembly **100** are more easily read, observed, and recognizable by an operator. For example, a bit-mapped image **75** projected onto a planar surface is preferably an orthographic projection. However, due to the curvature of the surface of the wheel rim and tire assembly and an angle at which the bit-mapped image **75** is projected onto the surface, the resulting images appearing on the wheel rim and tire surface are visually perceived by an operator as distorted. Utilizing known and/or measured parameters of the vehicle wheel balancer system **10** and the wheel rim and tire assembly **100**, a microprocessor can compensate or manipulate the bit-mapped images **75** from an orthographic projection, such that the resulting images appearing on the wheel rim and tire surface are visually perceived by an operator as substantially orthographic projections, i.e. straight lines visually appear straight, even when traversing a curved surface of the wheel rim and tire assembly, alphanumeric symbols are legible and aligned, etc.

In an alternate embodiment of the present invention, the operator of the vehicle wheel balancer system **10** may manually adjust the placement position of an imbalance correction weight in two dimensions on a surface of the vehicle wheel rim and tire assembly **100** by providing manual inputs to the microprocessor **12** such as through a rotary knob input **18**, which result in corresponding changes in the projected bit-mapped image **75** of an imbalance correction weight within the projection area **76**. The manual adjustment within two dimensions is limited to adjustments of the imbalance correction weight placement position within the field of projection **76** of the projected bit-mapped image **75** on the vehicle wheel rim surface.

The microprocessor **12** is configured to calculate a new imbalance correction weight magnitude, correspondingly update the rotational position of the wheel rim and tire assembly **100** to which the imbalance correction weight will be applied. If so equipped, the microprocessor **12** will direct the motor control **40** to servo the wheel rim and tire assembly **100** to the new rotational position, corresponding to the operator selected imbalance correction plane. The ability to over-ride the microprocessor-selected imbalance correction plane and weight placement rotational position is of particular importance when the operator, upon visual

inspection of the wheel rim and tire assembly 100, identifies a surface defect at the microprocessor-selected weight application point, resulting in the need to adjust at least one weight placement location(s).

The present invention can be embodied in the form of computer-implemented processes and apparatuses for practicing those processes. The present invention can also be embodied in the form of computer program code containing instructions embodied in tangible media, such as floppy diskettes, CD-ROMs, hard drives, or an other computer readable storage medium, wherein, when the computer program code is loaded into, and executed by, an electronic device such as a computer, micro-processor or logic circuit, the device becomes an apparatus for practicing the invention.

The present invention can also be embodied in the form of computer program code, for example, whether stored in a storage medium, loaded into and/or executed by a computer, or transmitted over some transmission medium, such as over electrical wiring or cabling, through fiber optics, or via electromagnetic radiation, wherein, when the computer program code is loaded into and executed by a computer, the computer becomes an apparatus for practicing the invention. When implemented in a general-purpose microprocessor, the computer program code segments configure the micro-processor to create specific logic circuits.

In view of the above, it will be seen that the several objects of the invention are achieved and other advantageous results are obtained. As various changes could be made in the above constructions without departing from the scope of the invention, it is intended that all matter contained in the above description or shown in the accompanying drawings shall be interpreted as illustrative and not in a limiting sense.

The invention claimed is:

1. In a wheel balancer having a shaft adapted for receiving a wheel rim and tire assembly, said shaft having a longitudinal axis and being rotatable about said axis so as to rotate the wheel rim and tire assembly removably mounted thereon; a rim measuring apparatus configured to measure at least one parameter of the wheel rim and tire assembly; a sensor assembly for measuring rotation of the shaft about its longitudinal axis; a control circuit connected to the sensor assembly and being responsive to the measured rotation of the shaft; a second sensor assembly for measuring imbalance of the wheel rim and tire assembly; and a microprocessor configured to utilize the wheel rim and tire parameters and measured imbalance to determining the magnitude and placement of a first correction weight in a first imbalance correction plane and the magnitude and placement of a

second correction weight in a second imbalance correction plane; the improvement comprising:

a display projection system for projecting at least one two-dimensional bit-mapped image onto a surface of a wheel rim and tire assembly mounted on the shaft;

wherein the microprocessor is further configured to alter said at least one two-dimensional bit-mapped image responsive to the at least one parameter of the wheel rim and tire assembly measured by the rim measuring apparatus; and

wherein said at least one two-dimensional bit-mapped image projected onto said wheel rim and tire assembly surface is compensated for a shape of said wheel rim and tire assembly surface.

2. A method for displaying information on a surface of a wheel rim and tire assembly, comprising:

obtaining a representation of a surface profile of the wheel rim and tire assembly;

projecting from a projection system, a two-dimensional bit-mapped image onto a surface of said mounted wheel rim and tire assembly, said two-dimensional bit-mapped image manipulated responsive to said obtained representation of said surface profile wherein said projected two-dimensional bit-mapped image is compensated for distortions resulting from said surface profile of said wheel rim and tire assembly.

3. The method of claim 2 for displaying information on a surface of a wheel rim and tire assembly wherein said two-dimensional bit-mapped image is an orthographic projection; and

wherein said step of manipulating said two-dimensional bit-mapped image responsive to said obtained representation of said surface profile substantially compensates said projected image from at least deviations from said orthographic projection due to said surface profile of said wheel rim and tire assembly.

4. The method of claim 2 for displaying information on a surface of a wheel rim and tire assembly wherein said two-dimensional bit-mapped image is an orthographic projection; and

wherein said step of manipulating said two-dimensional bit-mapped image responsive to said obtained representation of said surface profile substantially compensates said projected image from at least deviations from said orthographic projection due to an angle of projection between said projection system and said surface of said wheel rim and tire assembly.

* * * * *