

WinAlign® 11

Greater profit and productivity through innovation



HUNTER
Engineering Company

Alignment as easy as 1-2-3!

WinAlign® 11 fully integrates the functions of the console, sensors and lift into one highly efficient alignment system.

A series of automated features and intuitive software tools save time and simplify procedures to make alignment as easy as...

step

1

Select the vehicle



- ✓ Scan the VIN
or...
- ✓ Recall specs manually

step

2

Measure angles



- ✓ Install targets
- ✓ Capture measurements in 40 seconds
- ✓ Review "before" results

step

3

Make adjustments



- ✓ Follow the adjustment instructions
- ✓ Print before-and-after results

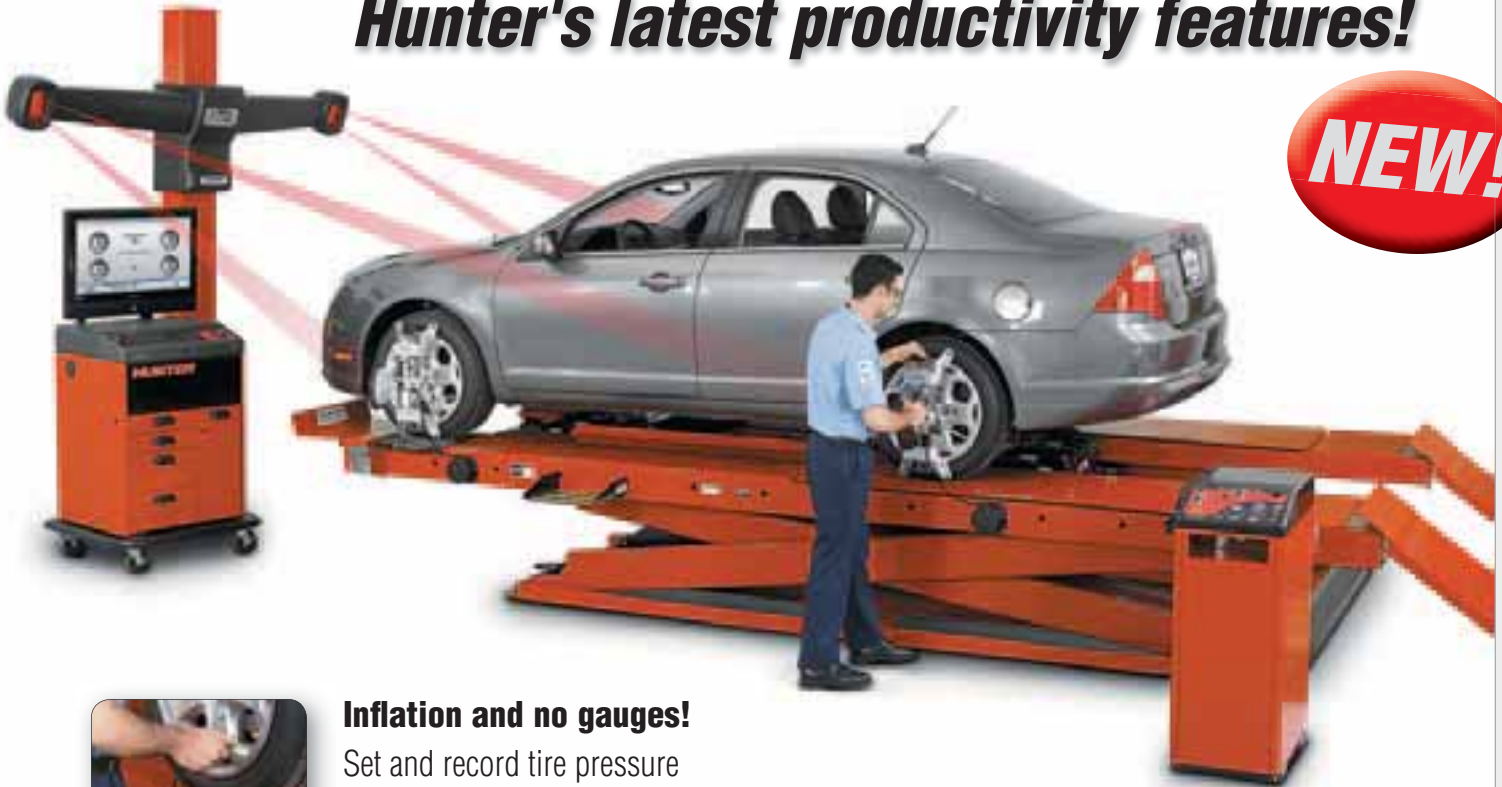
Present your results!



- ✓ Sell more alignments
- ✓ Generate greater profits

Hunter's latest productivity features!

NEW!



Inflation and no gauges!

Set and record tire pressure automatically without cumbersome hoses and gauges.



Easy access targets!

Store targets within arm's reach of each wheel for maximum productivity.



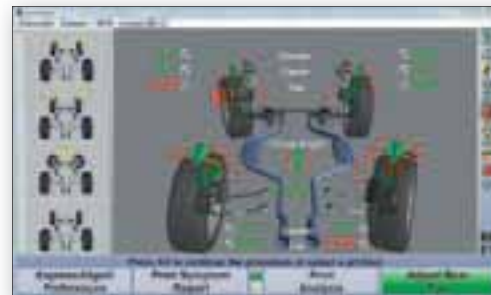
Lift-activated cameras!

Your cameras activate automatically as the lift raises to alignment height.



Recall specs in a snap!

Scan the VIN to instantly recall OE specs and custom alignment procedures for each vehicle.



Simplified adjustments!

Intuitive software features guide every adjustment.



Quick SAS reset!

Reset millions of OE Steering Angle Sensors (SAS) with one tool.



No more lock-pin hassles!

Forget pulling and replacing lock pins by hand.

Previous setups used valuable shop time...

Conventional electronic-sensor system – 10-minute plus procedure



- ✓ Chock wheels and lift vehicle
- ✓ Jack up front and rear of vehicle
- ✓ Check air pressure and recall specs
- ✓ Mount all 4 sensors, compensate each wheel, and remove pins
- ✓ Lower rear and front of vehicle and jounce
- ✓ Steer caster
- ✓ Print results

10:00+

ACTIVITY TRACKER

4	
6	
246	

Older technology requires long set-up times... 10:05 Total

Camera-sensor systems speed up the process



- ✓ Chock wheels and lift vehicle
- ✓ Check air pressure and recall specs
- ✓ Mount targets
- ✓ Roll to compensate
- ✓ Remove pins
- ✓ Steer caster
- ✓ Print results

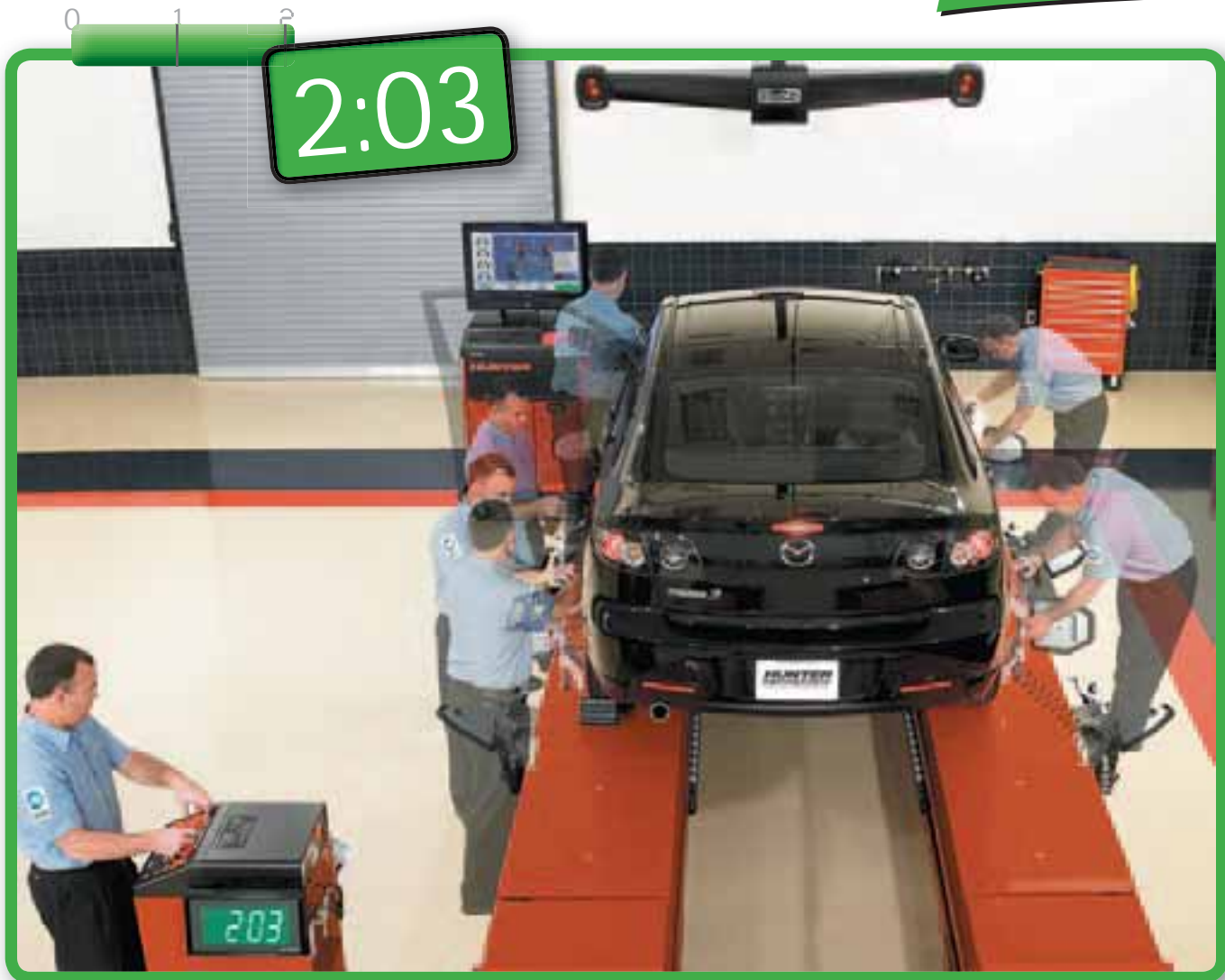
4:00

ACTIVITY TRACKER

3	
6	
183	

Early camera technology improves efficiency... 4:00 Total

...Today, present your results in just 2 minutes!




Hunter's WinAlign 11 and Premium RX Lift produce measurements in 2 minutes!


Hunter's 2-minute procedure


- ✓ Chock wheels and lift vehicle to work height
- ✓ Mount targets and set air pressure
- ✓ Roll to compensate
- ✓ Scan VIN to recall specs and perform enhanced caster steer
- ✓ Vehicle results print automatically

2:03 Total

ACTIVITY TRACKER

1  trip around the vehicle

0  trips to the console

72  total walking steps

trip around the vehicle

trips to the console

total walking steps



Fast printouts in 2 minutes!

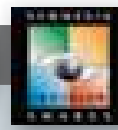
Use detailed printouts featuring your company's logo to sell more work.

When it comes to award-winning software, WinAlign® 11 is unmatched!

The importance of software...



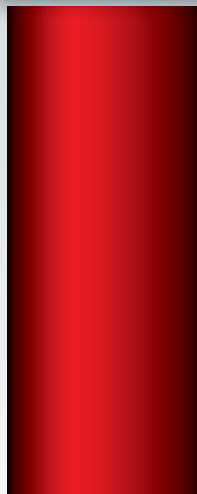
Over 30 years of experience and the largest R&D department in the undercar industry bring you the most profitable and productive software on the market.



Ordinary systems simply present alignment readings



Ordinary camera systems simply speed up these readings



WinAlign 11 maximizes profit and productivity in your alignment bay

- ▶ The **most extensive** vehicle information database for North America's 220 million vehicles.
- ▶ **Vehicle-specific** procedures guide your technicians with step-by-step instructions.
- ▶ **Patented and award-winning power tools** complete the work accurately the first time, every time.
- ▶ **WinAlign 11 maximizes profit and productivity in your alignment bay.**



ExpressAlign®

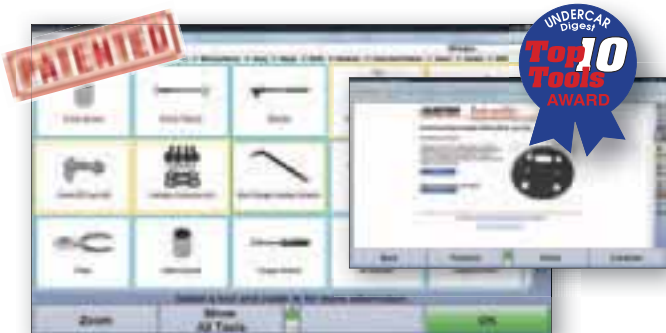
Perform every alignment with a streamlined procedure. ExpressAlign analyzes each job and presents the optimal action sequence with the minimum steps required.



WinToe®

Ensure a straight steering wheel every time without repeated adjustments or using a steering wheel holder.

🚩 A time-saver on nearly every alignment.



Tools and Kits Database

Save trips back and forth to the tool box. Hunter presents all of the tools and aftermarket correction kits needed for each alignment.

H *Online ordering supported.*



Virtual View®

Picture your alignment job in 3-D using real-time 3-D models. Used by experts and novices alike.

H *Every alignment can be shown in 3-D.*



Control Arm Movement Monitor®

Cut adjustment times in half for front-shim, dual-cam or dual-slot vehicles. Step-by-step graphics let you get it right on the first try.

H *Over 60 million vehicles benefit.*



Shim-Select® II

Eliminate confusing shim charts and tables. Shim Select II quickly calculates and displays the template you need for proper shim installation.

H *Over 30 million vehicles benefit.*



Wheel-Off Adjustment

Speed the alignment process by making adjustments with the wheel removed.*

H *Available when you need it.*



Automatic Bushing Calculator®

Calculate the proper bushing size and position adjustment without wasting time with a zero bushing.

H *Over 10 million light trucks and vans benefit.*

* Requires Wheel-Off Adjustment Kit 20-1978-1



OPTIONAL

CodeLink® resets steering angle sensors quickly and easily!

Over 20 million vehicles require a Steering Angle Sensor (SAS) reset after the alignment.

Hunter Engineering offers the only integrated tool to make this service fast, simple and affordable.

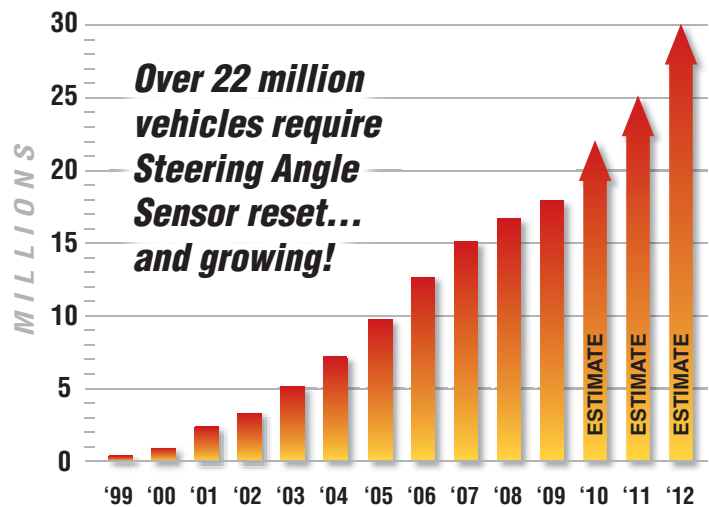
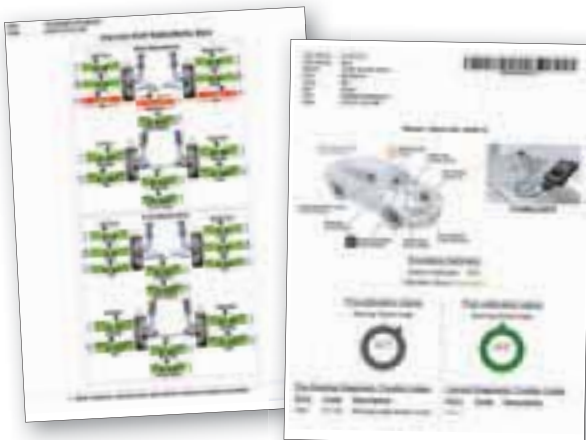
Fast, simple and affordable

- ✓ Automatically detects SAS reset vehicles.
- ✓ Automatically introduces SAS reset at the proper time.
- ✓ Easy-to-read screens simplify reset process.
- ✓ Updates yearly with alignment specs – no additional charges.
- ✓ Costs a fraction of OEM and aftermarket scan tools.



Document completed services

Show customers completed work with before-and-after color printouts of alignment adjustments and SAS reset.



H By 2012, all new vehicles will be manufactured with ESC. Many will require an SAS reset.*

Source: Hunter Engineering Company research

*Steering Angle Sensor reset requirements vary based on model and year. Please see Hunter's CodeLink 2010 Application Guide for detailed model and year coverage. Although steering angle sensors are most common, CodeLink also resets other related sensors when required, such as torque angle deceleration, and yaw rate sensors.

TPMSpecs™ brings concise TPMS information to your business!



TPMSpecs pulls together over **one hundred** OEM TPMS reset procedures into a simple, yet comprehensive, user-friendly tool for the technician.



Save time finding vehicle TPMSpecs



Fast and easy, one-click TPMS access with any bar code scanner! (Scanner sold separately)

TPMSpecs available at check-in too!



As an option, TPMS info can be presented through any internet-connected shop computer!

TouchRemote™ feature for Apple® iPhone®, iPod touch® and iPad® users



Hunter's new TouchRemote feature allows users of popular Apple iPhone, iPod touch and iPad devices to enjoy full wireless remote operation of WinAlign® alignment systems.

- ✓ Allows users to view live vehicle measurements.
- ✓ Full control over WinAlign software features.
- ✓ Vehicle-specific adjustment illustrations and digital images.

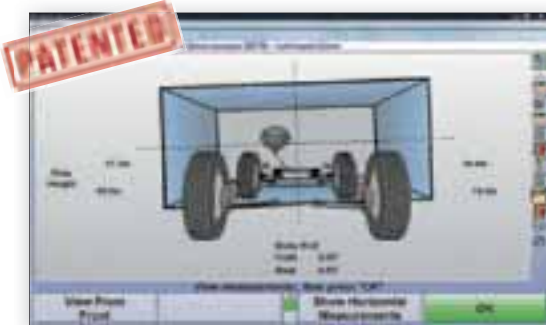
Standard with WA200 consoles running WinAlign version 11.1 software. Optional on WA100 consoles running WinAlign version 11.1 software by purchasing TouchRemote kit 20-2477-1 and a wireless network kit 20-2195-1.

TouchRemote requires a free app from iTunes® (search for "Hunter TouchRemote").

Requires Apple iPhone, iPod touch or iPad. Sold separately.

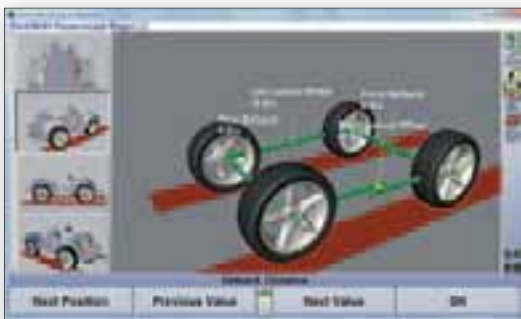
Take your alignment business to the next level!

Perform body shop alignments...



Suspension Body Dimension Audit

Quickly screen vehicles to determine alignability and collision repair needs.



Symmetry Angle Measurements

Instantly access symmetry angles and setback for your body shop customers.

Perform specialty alignments...



Live Ride Height Adjustment *

Measure and adjust ride height in real-time.

H Over 20 million vehicles require ride height measurement to complete alignment service.

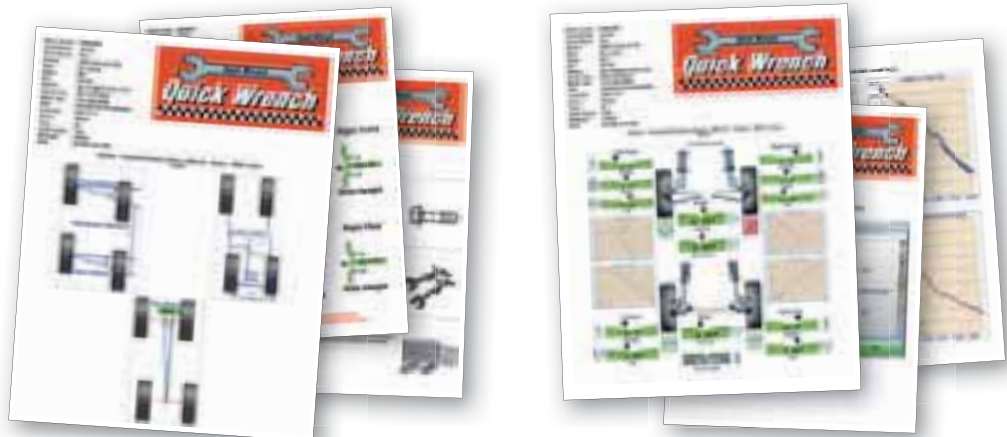


WinAlign Tuner™ *

Perform alignments on tuned suspensions and other modified vehicles with tools to monitor tire wear and handling.

Fast printouts to share with customers

Customize Hunter's detailed printouts to help explain service needs to customers or to document repairs.



Help your customers make informed decisions!



WinAlign® Video Library*

300+ videos cover all aspects of wheel alignment today.

- ✓ Educate your customers
- ✓ Find answers to unusual problems
- ✓ Extend your service and profit opportunities
- ✓ Strengthen technician competency



Point & Click Inspection Photos*

4,000+ vehicle-specific photos and illustrations to assist your shop.

- ✓ Show your customers their hidden repair needs
- ✓ Guide your technicians to the proper inspection points
- ✓ Extend your service and profit opportunities



The latest specs available online

Download, access and communicate alignment service information through the Internet.

- ✓ WebSpecs®.NET specification database
- ✓ ShopResults.NET® online service*
- ✓ UnderCarInfo.NET subscription*



WinAlign® printouts help sell work

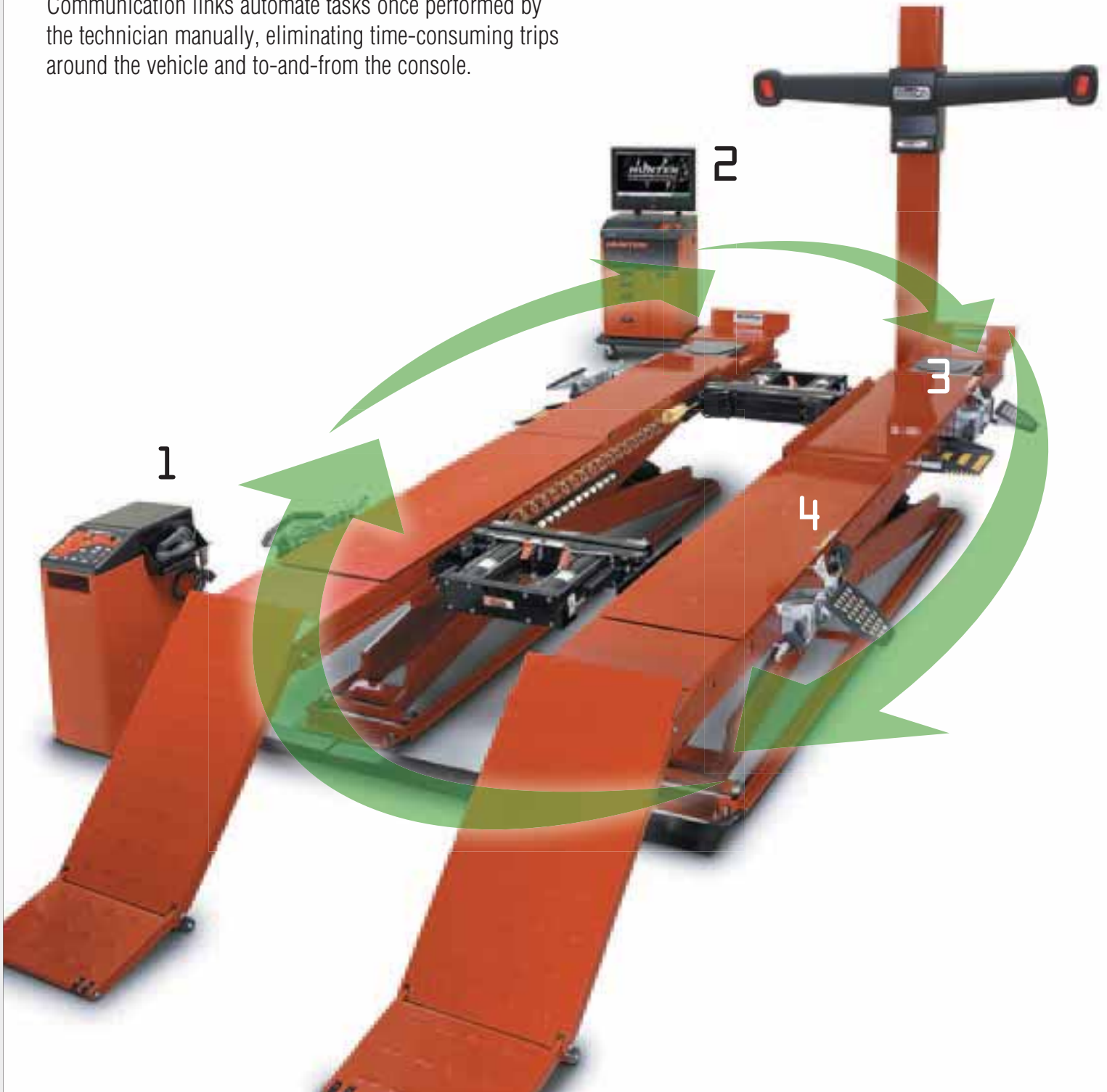
Explain needed parts and repairs and show completed work to customers using detailed, color-coded printouts.

- ✚ **Clear and detailed printouts help you communicate and build rapport with your customers and sell more alignments.**

FIA Fully Integrated Alignment



FIA streamlines the entire alignment process. Communication links automate tasks once performed by the technician manually, eliminating time-consuming trips around the vehicle and to-and-from the console.



PATENTED

1



RX Scissor Lift console

- ✓ Raising the vehicle triggers the sensors to look for wheel targets
- ✓ Control PowerSlide® and Inflation settings on the lift console
- ✓ Store barcode scanner and CodeLink tool near the vehicle to save steps



H *AlignLights turn on automatically at alignment height*

PATENTED

2



WinAlign console

- ✓ Centralized control of entire system
- ✓ Communicate directly with lift to set tire pressure and automatically operate turnplates and slipplates
- ✓ Guide the technician through the alignment process



H *Measurements are taken automatically once fourth target is installed*

PATENTED

3



POWER SLIDE

PowerSlide®

- ✓ Slipplates and turnplates automatically lock and unlock at appropriate times
- ✓ No more struggles with lock pins



H *Auto-locking turnplates and slipplates save trips around the vehicle*

PATENTED

4



INFLATION STATION

Inflation Station

- ✓ Automatically inflate all four tires simultaneously
- ✓ Record starting and final pressure
- ✓ Hose recoils to keep work area clear



H *Software tracks before and after tire pressures for the customer's printout*

Choose the right sensor package for your shop!



Fixed-column configurations fit most service bay applications.



Lift-column (LC) configurations automatically position the cameras to any lift height during the alignment process.



Wall- and ceiling-mount configurations are perfect when space is at a premium.



Cabinet-mounted configuration is mobile to service multiple alignment bays and provides a full range of travel for additional lift height.



Manually operated vertical camera configuration provides a full range of travel for additional lift height.



Floor-mounted overhead configurations are ideal for drive-through bays or to accommodate unique applications.

Choose the right alignment console for your shop!



	WinAlign Premium consoles	WinAlign consoles		
Hardware	Processor	Intel Core 2 Duo, 2.93 GHz (or greater)	Pentium Dual Core, 2.7 GHz processor	
	Memory (DDR2)	3 GB of RAM	2 GB of RAM	
	Hard drive	160.0 GB SATA hard drive (or greater)	160.0 GB SATA hard drive (or greater)	
	DVD-RW/CD-RW drive	Standard	Standard	
	Monitor size	20" or 26" widescreen LCD (32" available on large console)	17" or 19" flat panel (19" only on space-saver console)	
	Wireless network module	Standard	Optional	
	Operating system	Windows® Vista - Business	Windows® Vista - Home	
	Vehicle specifications (30 plus years)	2 years free updates	2 years free updates	
	Large console with drawers	Yes	N/A	
	Compact console with printer drawer	Yes	N/A	
	Productivity tools	PATENTED Award-winning WinAlign software	Yes	Yes
		PATENTED Real-time Specs delivered by web	WebSpecs®	WebSpecs®
PATENTED Steering System Reset (integrated)		Yes (with optional CodeLink®)	Yes (with optional CodeLink®)	
Complete TPMS Reset Database		Yes	Yes	
Live Ride Height Adjustment		Standard	Optional	
PATENTED Fully Integrated Alignment		Yes (FIA equipped rack required)	Yes (FIA equipped rack required)	
PATENTED Modified Vehicle Alignment		WinAlign Tuner®	Optional	
PATENTED Vehicle Inspection with photos		Standard	Optional	
PATENTED Tools & Kits – basic catalog		Complete	Complete	
PATENTED Tools & Kits – video and photos		Complete	Optional	
Equipment Video Help/Assistance		Standard	Optional	
PATENTED ShopResults (via ShopResults.NET®)		1 year standard	Optional	
UnderCarInfo (via UnderCarInfo.NET)		1 year standard	Optional	
PATENTED Training and Productivity Aids	4,000+ photos, 1,600+ illustrations 400+ videos & animations	1,600+ illustrations 100+ animations		
Turntables	Stainless steel	Powder coated		

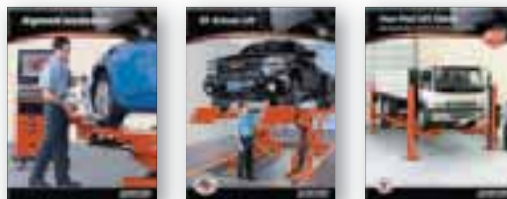
Increase revenue with Hunter merchandising!



Sell more alignments with **clear** and **informative** printouts

Sell and perform TPMS work **properly** and **efficiently**

Introduce your wheel alignment capabilities with great Point-of-Sale options from Hunter



Be sure to check out other Hunter literature for more quality products from Hunter Engineering.

HUNTER
Engineering Company
www.hunter.com