

# ***Auto34S Tire Changer***

***Simple operation and unmatched capability***



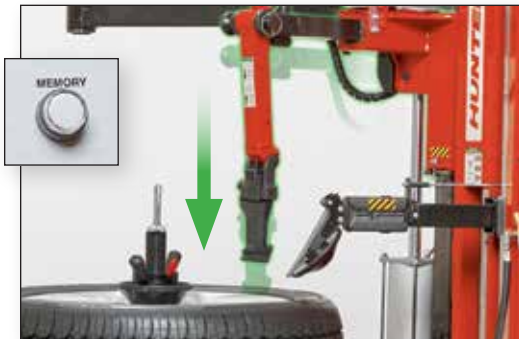
# Key features at a glance

## **UPDATED** Push-Button Controls



- ✓ Simple, three-button control
- ✓ Easiest operation in its class

## Memory Function



- ✓ Returns mount head to rim height
- ✓ Saves time and mistakes

## Diameter Control



- ✓ Operate all diameter functions from a single point
- ✓ Retains diameter until reset



TCA34S





*PATENTED*

### Leverless Tool Head



- ✓ Positions bead without levers
- ✓ Prevents damage to tire and rim

### Bead Press Arm



- ✓ Helps mount difficult tires
- ✓ Holds sidewalls into drop-center position

### Quick Clamp with Cam Plate



- ✓ Safely secures wheel through hub
- ✓ Speeds clamping process

### Mount/Demount Rollers



- ✓ Gently rolls bead from rim
- ✓ No rim contact
- ✓ Indent automatically

*STANDARD*

### Wheel Lift



- ✓ Space-saving design
- ✓ Easily and safely lift large assemblies

*EXCLUSIVE*

### Wheel Support Plate

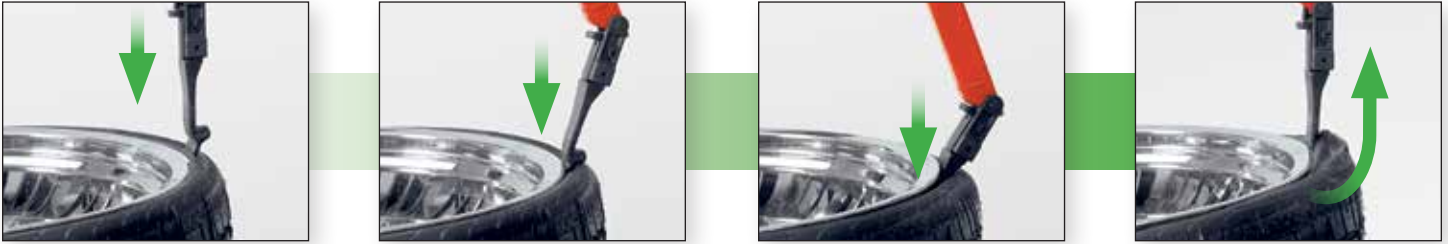


- ✓ Handles wide range of wheels
- ✓ Provides extra gripping force
- ✓ Three adjustable work heights

PATENTED

## ***Dynamic leverless tool head***

### **Demounting**



Tool head inserts into tire, pulls bead over and demounts in one fluid down/up motion.

### **Mounting**

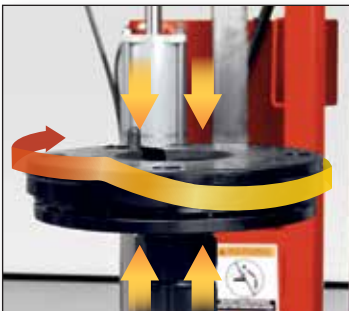


Thin, broad head alleviates stress on bead, and is durable enough to withstand immense mounting forces.

## ***Versatile clamping system***

- ✓ Adjusts to three working heights
- ✓ Handles wide range of rim diameters
- ✓ Cam action tightens as wheel turns
- ✓ Services reverse and standard wheels in same manner

PATENTED



***Cam plate rises to exert additional gripping force.***



***Rubber insert protects expensive reverse wheels.***



***Three easily adjustable clamping heights provide the versatility you need.***

## Simple controls



- ✓ Easy-to-operate, intuitive controls
- ✓ Three switches and one foot pedal control virtually all tire changing operations
- ✓ Includes manual controls for advanced or special techniques (PAX)



*Inflation, rotation and wheel lift operations are controlled by three foot pedals.*



*Memory function saves time by returning the mount head to the last position.*



## Diameter control

- ✓ Adjust tool head and rollers to the correct diameter from a single switch
- ✓ Retains diameter setting until reset, allowing quick and easy service of all four tires



## Motor & drive

- ✓ Variable-speed functionality
- ✓ High-powered electric motor delivers over 850 ft-lbs. of torque



# Enhanced features to make your tire service faster and easier



## Bead loosening roller auto-indentation

Sensor detects when roller is under rim flange and automatically indents bead loosening disc.



## Bead press arm

Assists with mounting a difficult tire and eases demounting of a standard tire.



## Blast inflation

Directs large blast of compressed air exactly where needed to seat the bead.



## Expandable base

Three-position base expands up to 34 inches to accommodate larger assemblies.



## Match-mounting

The Auto34S's bead rollers allow spinning of tire on rim, helping match-mount stiffest point on tire to low spot on rim.



When used with Hunter's Road Force Touch<sup>®</sup>, the Auto34S quickly and easily helps eliminate vibration problems balancers alone can't fix.

# Standard accessories

The Auto34S tire changer comes equipped to handle virtually all common tire and wheel combinations.

<b>A</b>	<b>RP6-G1000A80</b>	Quick Clamp
<b>B</b>	<b>RP6-710090480</b>	Pin protector (2)
<b>C</b>	<b>RP6-710012940</b>	Pin extension
<b>D</b>	<b>145-341-2</b>	Air chuck
<b>E</b>	<b>RP6-710090730</b>	Traction bar
<b>F</b>	<b>148-133-2</b>	Lubrication oil
<b>G</b>	<b>179-15-2</b>	Glasses
<b>H</b>	<b>221-659-2</b>	Bead starting tool
<b>I</b>	<b>RP6-3784</b>	Paste
<b>J</b>	<b>RP6-1506</b>	Paste brush
<b>K</b>	<b>RP6-710013421</b>	Support plate cover (2)
<b>L</b>	<b>RP6-710014120</b>	Toolhead (2)
<b>M</b>	<b>RP6-1157</b>	Two-sided cone
<b>N</b>	<b>RP6-G1000A86</b>	Mirror



# Optional accessories



**Flange plate kit  
RP6-G1000A87**  
Ideal for plastic-faced wheels or reverse wheels where maximum protection is needed.



**19.5-inch wheel adaptor  
20-2341-1**  
Adds clamping capability for 19.5 in. wheels with large center holes.



**Long pins  
RP6-G1000A102**  
Allows servicing of reverse wheels with extra deep spokes. For use with flange plate (RP6-G1000A87).



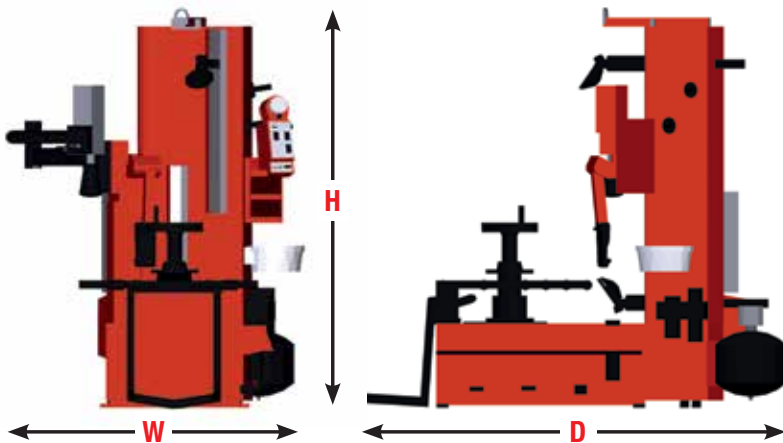
**PAX® Tire System kit  
RP6-G1000A73**  
Allows servicing Michelin® PAX® systems.



**Basic flange plate kit  
RP6-G1000A123**  
Ideal for shops that handle plastic-clad wheels without need of reverse applications.

# Specifications

<b>Power requirements</b>	208-230V, 15A, 60Hz, 1ph NEMA 20 amp plug, L6-20P
<b>Air supply requirements</b>	115-175 psi (8-12 bar)
<b>Mount / demount tool</b>	Self-inserting, polymer leverless head
<b>Clamping type</b>	Center w/Quick Clamp and cam plate
<b>Bead loosening type</b>	Upper / lower roller
<b>Match-mounting capable</b>	Yes
<b>Adjustable clamping height</b>	Yes
<b>Rim diameter range</b>	10-30 / 12-32 / 14-34 in.
<b>Maximum...</b>	
Tire diameter	50 / 52 / 54 in.
Wheel width	19 in.
<b>Drive</b>	Variable up to 14 rpm CW, 7 rpm CCW
Torque	867 ft-lbs (1175 Nm)
<b>Shipping weight</b>	1,150 lbs. (521 kg)
<b>Dimensions</b>	
Height ( <b>H</b> )	72 in. (1829 mm)
Width ( <b>W</b> )	48 in. (1219 mm)
Depth ( <b>D</b> )	80 in. (2032 mm)



*Because of continuing technological advancements, specifications, models and options are subject to change without notice.*

0919CH

Copyright © 2019, Hunter Engineering Company

**HUNTER**  
**Engineering Company**

[www.hunter.com](http://www.hunter.com)

Form 7071-T, 09/19  
Supersedes form 7071-T, 04/17