

Auto34S Tire Changer

Simple operation and unmatched capability



Key features at a glance

UPDATED Push-Button Controls



- ✓ Simple, three-button control
- ✓ Easiest operation in its class

Memory Function



- ✓ Returns mount head to rim height
- ✓ Saves time and mistakes

Diameter Control



- ✓ Operate all diameter functions from a single point
- ✓ Retains diameter until reset



TCA34S-E



PATENTED

Leverless Tool Head



- ✓ Positions bead without levers
- ✓ Prevents damage to tire and rim

Bead Press Arm



- ✓ Helps mount difficult tires
- ✓ Holds sidewalls into drop-center position

Quick Clamp with Cam Plate



- ✓ Safely secures wheel through hub
- ✓ Speeds clamping process

Mount/Demount Rollers



- ✓ Gently rolls bead from rim
- ✓ No rim contact
- ✓ Indent automatically

STANDARD

Wheel Lift



- ✓ Space-saving design
- ✓ Easily and safely lift large assemblies

EXCLUSIVE

Wheel Support Plate

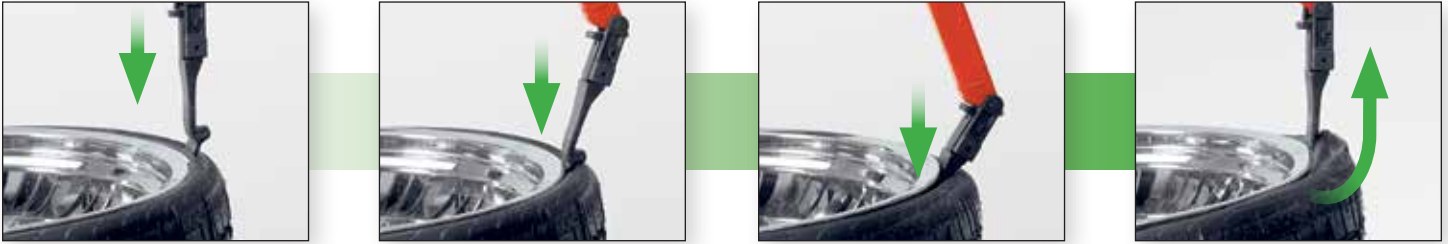


- ✓ Handles wide range of wheels
- ✓ Provides extra gripping force
- ✓ Three adjustable work heights

PATENTED

Dynamic leverless tool head

Demounting



Tool head inserts into tire, pulls bead over and demounts in one fluid down/up motion.

Mounting

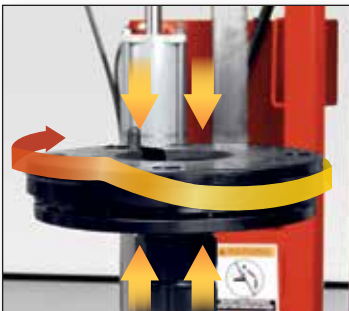


Thin, broad head alleviates stress on bead, and is durable enough to withstand immense mounting forces.

Versatile clamping system

- ✓ Adjusts to three working heights
- ✓ Handles wide range of rim diameters
- ✓ Cam action tightens as wheel turns
- ✓ Services reverse and standard wheels in same manner

PATENTED



Cam plate rises to exert additional gripping force.



Rubber insert protects expensive reverse wheels.



Three easily adjustable clamping heights provide the versatility you need.

Simple controls



- ✓ Easy-to-operate, intuitive controls
- ✓ Three switches and one foot pedal control virtually all tire changing operations
- ✓ Includes manual controls for advanced or special techniques (PAX)



Inflation, rotation and wheel lift operations are controlled by three foot pedals.



Memory function saves time by returning the mount head to the last position.



Diameter control

- ✓ Adjust tool head and rollers to the correct diameter from a single switch
- ✓ Retains diameter setting until reset, allowing quick and easy service of all four tires



Motor & drive

- ✓ Variable-speed functionality
- ✓ High-powered electric motor delivers 1175 Nm (850 ft-lbs.) of torque

Enhanced features to make your tire service faster and easier



Bead loosening roller auto-indention

Sensor detects when roller is under rim flange and automatically indents bead loosening disc.



Bead press arm

Assists with mounting a difficult tire and eases demounting of a standard tire.



Blast inflation

Directs large blast of compressed air exactly where needed to seat the bead.



Expandable base

Three-position base expands up to 864 mm (34 in.) to accommodate larger assemblies.



Match-mounting

The Auto34S's bead rollers allow spinning of tire on rim, helping match-mount stiffest point on tire to low spot on rim.



When used with Hunter's Road Force Touch® GSP9700, the Auto34S quickly and easily helps eliminate vibration problems balancers alone can't fix.

Standard accessories

The Auto34S tire changer comes equipped to handle virtually all common tire and wheel combinations.

A	RP6-G1000A80	Quick Clamp
B	RP6-710090480	Pin protector (2)
C	RP6-710012940	Pin extension
D	RP6-710090730	Traction bar
E	RP6-710014120	Toolhead (2)
F	RP6-3784	Paste
G	RP6-1506	Paste brush
H	RP6-710013421	Support plate cover (2)
I	RP6-1157	Two-sided cone
J	RP6-G1000A86	Mirror



Optional accessories



**Flange plate kit
RP6-G1000A87**
Ideal for plastic-faced wheels or reverse wheels where maximum protection is needed.



**19.5-inch wheel adaptor
20-2341-1**
Adds clamping capability for 19.5 in. wheels with large center holes.



**Long pins
RP6-G1000A102**
Allows servicing of reverse wheels with extra deep spokes. For use with flange plate (RP6-G1000A87).



**PAX® Tire System kit
RP6-G1000A73**
Allows servicing Michelin® PAX® systems.



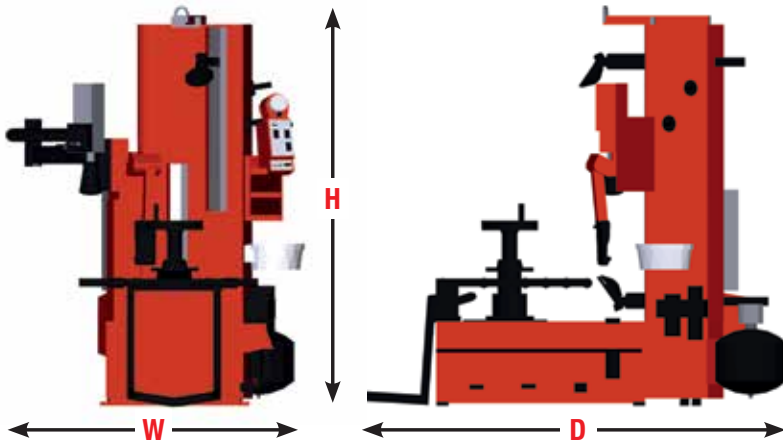
**Basic flange plate kit
RP6-G1000A123**
Ideal for shops that handle plastic-clad wheels without need of reverse applications.

Specifications

Power requirements	208-230V, 15A, 50/60Hz, 1ph
Air supply requirements	8-12 bar (115-175 psi)
Mount / demount tool	Self-inserting, polymer leverless head
Clamping type	Center w/Quick Clamp and cam plate
Bead loosening type	Upper / lower roller
Match-mounting capable	Yes
Adjustable clamping height	Yes
Rim diameter range	10-30 / 12-32 / 14-34 in.
Maximum...	
Tire diameter	50 / 52 / 54 in.
Wheel width	19 in.
Drive	Variable up to 14 rpm clockwise, 7 rpm counter-clockwise
Torque	1175 Nm (867 ft-lbs.)
Shipping weight	521 kg (1150 lbs.)
Dimensions	
Height (H)	1829 mm (72 in.)
Width (W)	1219 mm (48 in.)
Depth (D)	2032 mm (80 in.)



TCA34S-E



Because of continuing technological advancements, specifications, models and options are subject to change without notice.

0919CH

Copyright © 2019, Hunter Engineering Company

HUNTER
Engineering Company

www.hunter.com

11250 Hunter Drive, Bridgeton, MO 63044, USA

Tel: 1-314-731-3020, Fax: 1-314-731-0132

Email: international@hunter.com

Form 7071-TE-05, 09/19
Supersedes form 7071-TE-05, 10/17