

# **SS100**

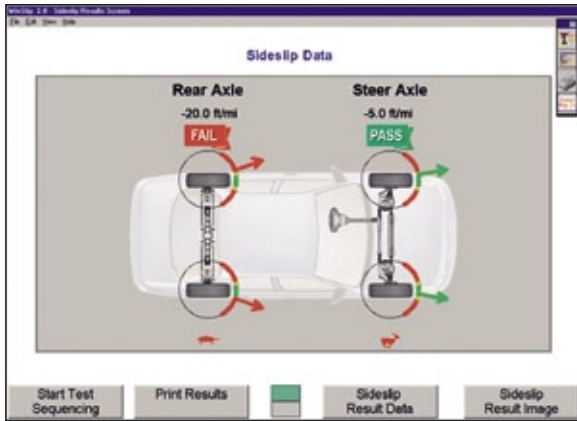
***Sideslip Meter for Passenger Cars and Light Trucks***



- ✓ ***Identify service opportunities in 30 seconds or less***
- ✓ ***Hands-free operation***
- ✓ ***Color printouts document results***

***HUNTER***  
***Engineering Company***

# SS100 Sideslip Meter



Sideslip is an indicator of incorrect wheel alignment. Test results for each axle are displayed with color-coded graphics for "pass," "marginal," or "fail." On this vehicle the front axle sideslip passes; the rear axle fails.



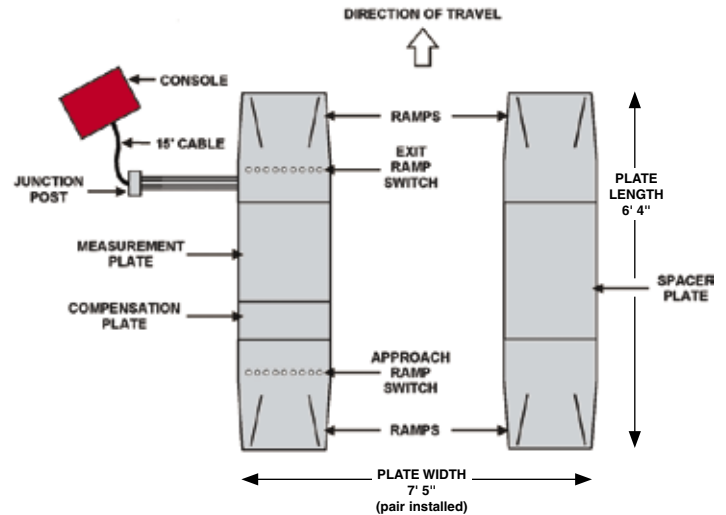
SS100 screens are easily printed for service records or to help explain needed service to customers.



S811-17-SS console with 17" color monitor



S511M-17-SS console



## SS100 Specifications:

<b>Capacity:</b>	Max. 7000 lbs./axle
<b>Testing Time:</b>	Approximately 30 seconds
<b>Power Requirements:</b>	110 VAC, 60 Hz, 1-ph (console)

## Standard Accessories:

- Cabinet
- Premium color printer
- Wireless remote
- Mouse pointer (S811 only)

## SS100 Ordering Information:

**S811-17-SS** Mobile cabinet with 17" SVGA display, PC hardware and Windows®-based WinSlip software. Capable of storing and recalling previous tests. (Does not run 2 sets of plates)

**S511M-17-SS** Economy cabinet with 17". UVGA display, proprietary computer and ProSlip software. Not capable of storing or recalling previous tests. (May operate two sets of plates.)

**SS104** Sideslip Meter Plates.

0910DAP2M.37

**HUNTER**  
Engineering Company

[www.hunter.com](http://www.hunter.com)