

GM Road Force[®] GSP9700

Supplemental Order Guide

**Exclusive
features for
GM dealers**



HUNTER
Engineering Company

GM Road Force® balancer – specially designed for GM shops

EXCLUSIVE

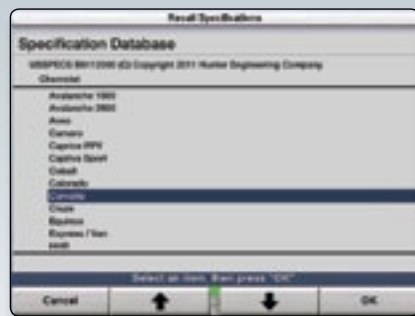
Two Balance Modes



- ✓ Specialized GM balance
- ✓ Standard Road Force® balance for non-GM vehicles

EXCLUSIVE

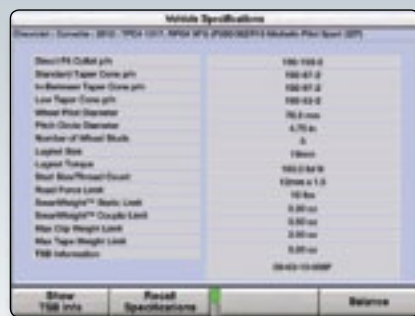
GM Vehicle Selection Database



- ✓ Easy navigation to vehicle
- ✓ Automatic spec recall using optional VIN barcode scanner
- ✓ Includes model-specific specs

EXCLUSIVE

GM Specification Overview



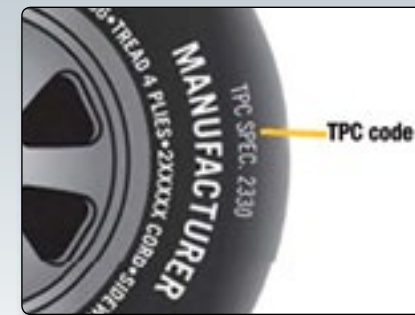
- ✓ Highlights direct fit collets, lugnut torque and more!



RF33GM shown

EXCLUSIVE

TPC Specification Codes Recall



- ✓ Ensures vehicles are using GM-specified tires

EXCLUSIVE

Technical Service Bulletins



- ✓ View GM's balancing-related TSBs associated with vehicle

EXCLUSIVE

GM Balance Screen



- Displays data exclusive to GM:
- A** Vehicle and tire information
 - B** Direct fit collet required
 - C** Road Force® Limit

EXCLUSIVE

Flange Plate Reminder



- ✓ Reminds techs to use flange plate to prevent damage
- ✓ Shows proper usage of plates

EXCLUSIVE

3M™ Wheel Weight System



- A** Displays 3M wheel weights as well as clip-on and tape weights

EXCLUSIVE

Custom GM Printout



- ✓ Details balance results for vehicle being serviced

Specifications



RF03GM shown

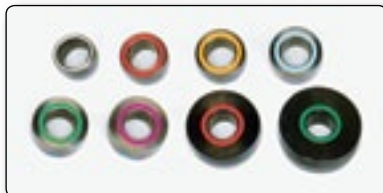
Power Requirements	196-253V, 10 amp, 50/60 Hz, 1 ph (Power cable includes: NEMA 20 amp plug, L6-20P)
Air Supply Requirements	100-175 psi (7-12 bar)
Roller Force	Variable up to 1,250 lbs (567 kg)
Capacity	
Rim Width	1.5 in to 20.5 in (38 mm to 521 mm)
Rim Diameter	10 in to 30 in (254 mm to 762 mm)*
ALU	14 in to 44 in (356 mm to 1118 mm)*
Max. Tire Diameter	40 in (1016 mm)
Max. Tire Width	20 in (508 mm)
Max. Tire Weight	175 lbs (79 kg)
Radial and Lateral Runout Accuracy	0.002 in (0.051 mm)
Imbalance Resolution	± 0.01 oz (0.28 g)
Placement Accuracy	512 positions, ± 0.35°
Balancing Speed	290-300 rpm
Motor	Programmable drive system and DC motor
Shipping Weight	650 lbs to 850 lbs (295 kg to 385 kg)
Shipping Weight with Wheel Lift	750 lbs to 950 lbs (340 kg to 430 kg)

* Extreme wheel sizes may require manual data entry.

Models

	RF33GM	RF32GM	RF31GM	RF30GM	RF23GM	RF22GM	RF21GM	RF20GM	RF13GM	RF12GM	RF11GM	RF10GM	RF03GM	RF02GM	RF01GM	RF00GM
Wheel Lift System	✓	✓	✓	✓					✓	✓	✓	✓				
AutoClamp® System	✓	✓	✓	✓	✓	✓	✓	✓								
TDC Laser System	✓	✓			✓	✓			✓	✓			✓	✓		
Ink Jet Print w/Storage	✓		✓		✓		✓		✓		✓		✓		✓	
Width (W)	72 in 1829 mm	66 in 1676 mm	72 in 1829 mm	66 in 1676 mm	65 in 1651 mm	58 in 1473 mm	65 in 1651 mm	56.5 in 1435 mm	72 in 1829 mm	66 in 1676 mm	72 in 1829 mm	66 in 1676 mm	65 in 1651 mm	56.5 in 1435 mm	65 in 1651 mm	56.5 in 1435 mm
Height (H)	86 in 2184 mm	86 in 2184 mm	73 in 1854 mm	73 in 1854 mm	86 in 2184 mm	86 in 2184 mm	73 in 1854 mm	73 in 1854 mm	86 in 2184 mm	86 in 2184 mm	73 in 1854 mm	73 in 1854 mm	86 in 2184 mm	86 in 2184 mm	73 in 1854 mm	73 in 1854 mm
Depth (D)	62 in 1575 mm	62 in 1575 mm	62 in 1575 mm	62 in 1575 mm	62 in 1575 mm	62 in 1575 mm	62 in 1575 mm	62 in 1575 mm	62 in 1575 mm	62 in 1575 mm	62 in 1575 mm	62 in 1575 mm	62 in 1575 mm	62 in 1575 mm	62 in 1575 mm	62 in 1575 mm

Optional Accessories



Hunter direct-fit collets

- ✓ Only mounting adaptors approved by GM
- ✓ Accurately center-mount wheels
- ✓ Avoid damage to plastic-clad wheels



Adjustable flange plate kit

- ✓ Provides precise, accurate mounting
- ✓ Prevents damage to rim

Because of continuing technological advancements, specifications, models and options are subject to change without notice.

HUNTER
Engineering Company

www.hunter.com