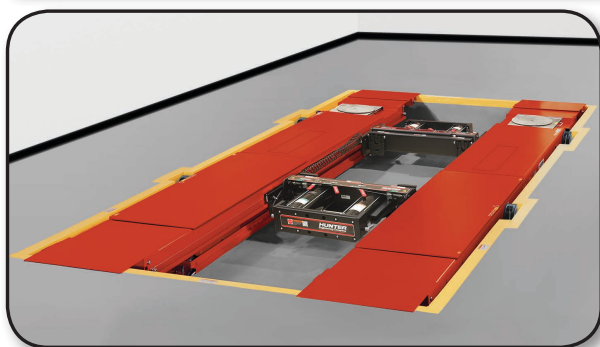


RX55KFIS

Flush Mount Lift Rack

HUNTER
Engineering Company

SPECIFICATIONS



RX55KFIS Shown (jacks optional)

Power Requirements (for available models)

| | |
|-------------|---|
| 215E | 200/208/230 VAC, 1 phase, 50 HZ, 26 Amp |
| 216E | 200/208/230 VAC, 1 phase, 60 HZ, 26 Amp |
| 435E | 208/230/400/460 VAC, 3 phase, 50 HZ, 18 Amp (208/230) / 9 Amp (400/460) draw |

Site Specifications (Refer to 7511-TE for full site requirements)

| | |
|--------------------------------|--|
| Air Supply Requirements | 9-10.3 bar (130-150 PSI) |
| Minimum Concrete Spec. | 76 mm (3 in.) thick, 20,700 kPa (3000 PSI) rating |
| Maximum Floor Slope | 51 mm (2 in.) over 3200 mm (126 in.) |

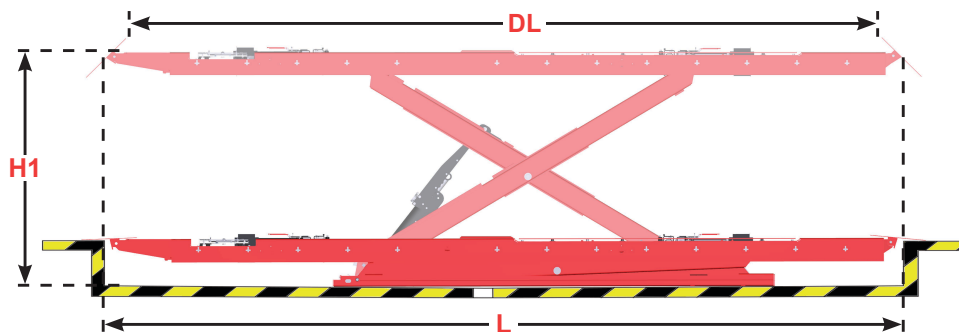
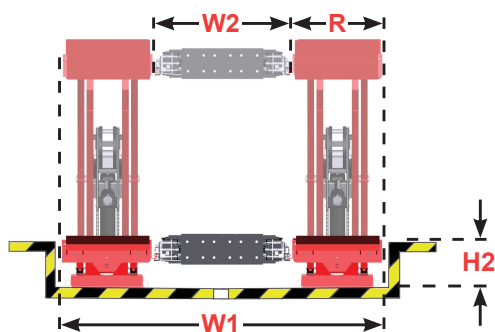
Product Specifications

| | |
|----------------------------------|-----------------------|
| Max. Vehicle Weight | 5500 kg (12,000 lbs.) |
| Max. Wheelbase | |
| General Service | 4572 mm (180 in.) |
| Two-Wheel Alignment | 4445 mm (175 in.) |
| Four-Wheel Alignment | 4013 mm (158 in.) |
| Alignment Height | All lock positions |
| Min. Four-Wheel Alignment | 2235 mm (88 in.) |
| Lifting Speed | 1-speed, 55 seconds |
| Lowering Speed | 2-speed, 25 seconds |

MODEL FEATURES / DIMENSIONS

| Feature | std. | opt. |
|---|------|------|
| FIA Fully Integrated Alignment | ✓ | |
| POWER SLIDE | ✓ | |
| INFLATION STATION | ✓ | |
| Two-Speed Lowering | ✓ | |
| 6000-lb Swing Air Jacks (optional) | | opt. |

| Dimension | |
|---------------------------|--|
| Outside Width (W1) | 2248 mm 88.5 in. |
| Inside Width (W2) | 1016 mm 40 in. |
| Length (L) | 5801 mm 228.375 in. |
| Deck Length (DL) | 5423 mm 213.5 in. |
| Runway Width (R) | 610 mm 24 in. |
| Raised Height (H1) | 1803 mm 71 in. |
| Stack Height (H2) | 267 mm to 292 mm 10.5 in. to 11.5 in. |



Continued on Page 2

For general inquiries visit:
www.hunter.com

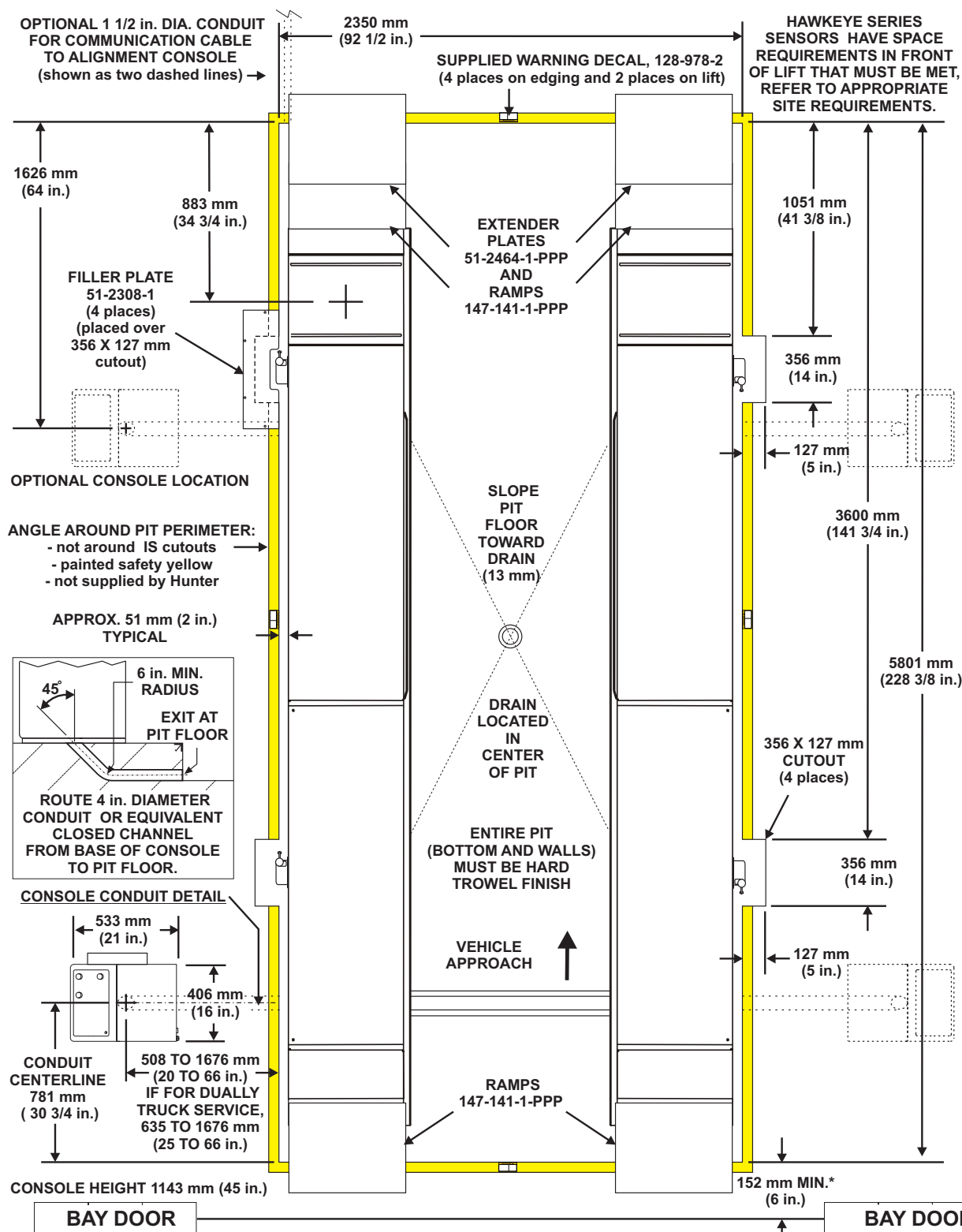
For local contact visit:
www.hunter.com/hunter-international

RX55KFIS

Flush Mount Lift Rack

HUNTER
Engineering Company

SPECIFICATIONS (Refer to 7511-TE for construction drawings)



* LONGER VEHICLES WILL NEED TO BE SERVICED WITH THE BAY DOOR OPEN. TO ACCOMMODATE MOST VEHICLES, INCREASE THE SPACE BEHIND THE PIT TO 991 mm (39 in.) OR GREATER.

Dimensions shown are for end result. Tile thickness (if applicable) must be considered before pouring concrete.

Positioning of control console is limited to a maximum space between console and rack of 1676 mm (66 in.) at the approach ramp end and 4877 mm (192 in.) at the turnplate end.