

# ***SmartWeight Touch<sup>®</sup>***

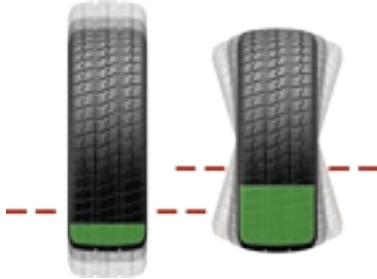
***High-capacity balancer with unmatched features***



# Key features at a glance

**PATENTED**

## SmartWeight® technology



- ✓ Improves balance
- ✓ Minimizes weight usage
- ✓ Maximizes productivity

**STANDARD**

## Touchscreen interface



- ✓ Intuitive design
- ✓ Quickly trains new technicians

**PATENTED**

## eCal Auto-Calibration



- ✓ True “self-calibration”
- ✓ No operator input required







**SWT02** shown with optional BullsEye® collets and barcode scanner

*EXCLUSIVE*

## HammerHead® option



- ✓ Speeds clip-weight placement
- ✓ Improves balance
- ✓ Illuminates work area

*EXCLUSIVE*

## On-demand videos



- ✓ Simplifies training
- ✓ Improves results

*PATENTED*

## CenteringCheck®



- ✓ Ensures proper centering
- ✓ Eliminates setup errors



*EXCLUSIVE*

## TPMSpecs®



- ✓ View reset procedures
- ✓ Updateable database
- ✓ Produce hardcopy pages with optional printer

*STANDARD*

## Bottom-dead-center laser



- ✓ Speeds tape-weight placement
- ✓ Improves accuracy

*EXCLUSIVE*

## Superior alloy shaft



- ✓ Most durable in industry
- ✓ Ensures accurate balancing for years to come

EXCLUSIVE

# Intuitive touchscreen simplifies experience



Touching weight value serves  
wheel to weight location



Rim cutaway displays selected  
weight mode

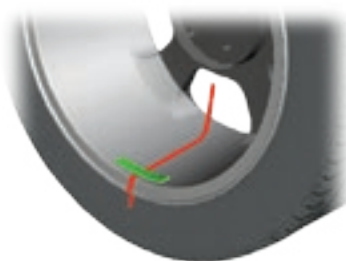


Switch text language with  
the push of a button

## Balancing interface at a glance



One touch to display  
rim dimensions



TruWeight® provides live  
navigation through selection and  
placement of wheel weights

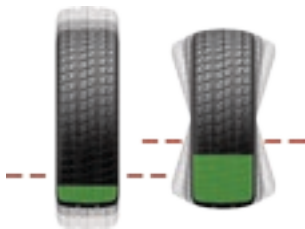


SmartWeight® panel displays  
wheel balance condition

# Revolutionary SmartWeight® by the numbers

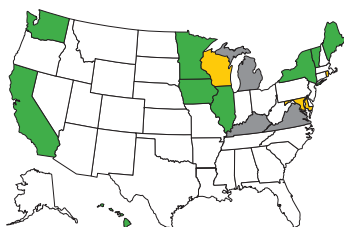
PATENTED

## SmartWeight® Balancing Technology



- ✓ Minimizes weight usage
- ✓ Maximizes productivity
- ✓ Reduces comebacks

## Lead-free initiative growing



- ▶ 9 states ban lead weights
- ▶ 3 states pending legislation
- ▶ 3 states with governmental actions underway

## Watch your savings grow!



See weight and labor savings  
based on your shop's numbers

Modern vehicles are **4 times** more sensitive to static vibration forces than couple or dynamic forces.

4

**9 states** have banned lead correction weights, other states will follow.

9

*What this means for you  
at 10 vehicles per day...*

SmartWeight® saves **25 labor hours** per year with efficient weight applications.\*

25

Avoid an average of **66 comebacks** per year by using SmartWeight®.\*\*

66

An average shop saves **7,130 oz** per year with SmartWeight®.\*\*\*

7,130

\* Timesavings are calculated from comparing single- and no-weight applications when using SmartWeight® versus the typical two-weight application of standard balancers.

\*\* Comeback avoidance is calculated based on residual static imbalance left by standard balancers versus SmartWeight® balancers.

\*\*\* Calculations based on 10 vehicles per day in a standard working year. Performance differences are those of a SmartWeight®-equipped balancer vs. a traditional wheel balancer.



# Exclusive features make balancing faster and easier

## EXCLUSIVE

### Vehicle database with TPMSpecs®

- ✓ Displays proper mounting adaptors
- ✓ Presents 100+ TPMS reset procedures in a simple comprehensive, user-friendly way
- ✓ Present TPMS info through any internet-connected shop computer



Technicians are guided with helpful tips and time-saving procedures.

## EXCLUSIVE

### On-Screen Instruction

- ✓ High-definition videos provide instruction on a variety of balancing and tire changing topics.
- ✓ Covers basic techniques to more advanced procedures
- ✓ Instant access, easy navigation
- ✓ On-site training for your technicians



## PATENTED

### Automatic Mode Detection

Eliminate the need to select the balance mode and reduce service time and possible mode entry errors.

**No need to push buttons**



## EXCLUSIVE

### Live 3D graphics

Interactive display intuitively guides technicians through balancing procedures.

**Decreases training time**

# Popular equipment upgrades



## Wheel lift

- ✓ Safely service heavy, oversized wheels
- ✓ Precisely center all wheels



## SpeedClamp®

- ✓ Clamp wheels automatically
- ✓ Save time and effort
- ✓ Eliminate wingnut



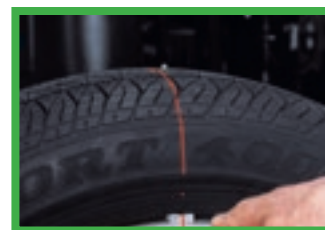
PATENTED

## HammerHead® top-dead-center laser

- ✓ Greater weight placement accuracy to avoid mistakes
- ✓ More single-spin balances improve productivity
- ✓ Overhead fluorescent light illuminates work area



✗ Incorrect



✓ Correct



## Printer kit with storage shelf\*

- ✓ Print TPMSpecs® procedures
- ✓ Print SmartWeight® results
- ✓ Show your customers their results



## BullsEye® centering system

- ✓ Optimize centering
- ✓ Prevent wheel damage

\* Printer model may vary.

# Specifications



SWT13 shown

## Power requirements

196-253V, 10 amp, 50/60 Hz, 1 ph (Power cable includes: NEMA 20 amp plug, L6-20P)

## Air supply requirements

100-175 psi (7-12 bar)\*

## Capacity

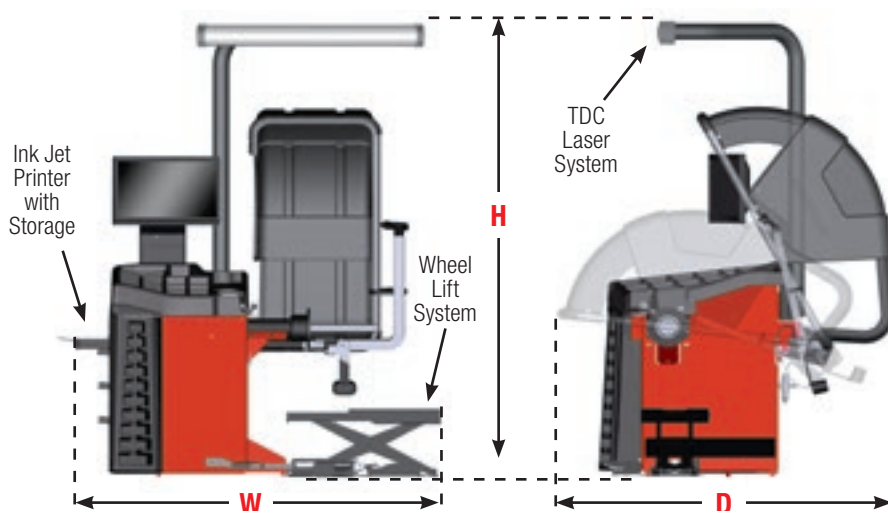
Rim width	1.5 in. to 20.5 in. (38 mm to 521 mm)**
Rim diameter	10 in. to 30 in. (254 mm to 762 mm)**
ALU	14 in. to 40 in. (356 mm to 1016 mm)**
Max. tire diameter	44 in. (1118 mm)
Max. tire width	20 in. (508 mm)
Max. tire weight	175 lbs. (79 kg)
Imbalance resolution	± 0.01 oz (0.28 g)
Placement accuracy	512 positions, ± 0.35°
Balancing speed	300 rpm
Motor	Programmable drive system and DC motor

\* Wheel lift and SpeedClamp® models only.

\*\* Extreme wheel sizes may require manual data entry.

# Models

	SWT33	SWT32	SWT31	SWT30	SWT23	SWT22	SWT21	SWT20	SWT13	SWT12	SWT11	SWT10	SWT03	SWT02	SWT01	SWT00
Wheel Lift System	✓	✓	✓	✓					✓	✓	✓	✓				
SpeedClamp® System	✓	✓	✓	✓	✓	✓	✓	✓								
TDC Laser System	✓	✓			✓	✓			✓	✓			✓	✓		
Ink Jet Printer w/ Storage	✓		✓		✓		✓		✓		✓		✓		✓	
Width (W)	73 in 1854 mm	67 in 1702 mm	73 in 1854 mm	67 in 1702 mm	65 in 1651 mm	58 in 1473 mm	65 in 1651 mm	56.5 in 1435 mm	73 in 1854 mm	67 in 1702 mm	73 in 1854 mm	67 in 1702 mm	65 in 1651 mm	56.5 in 1435 mm	65 in 1651 mm	56.5 in 1435 mm
Height (H)	89 in 2261 mm	89 in 2261 mm	73 in 1854 mm	73 in 1854 mm	89 in 2261 mm	89 in 2261 mm	73 in 1854 mm	73 in 1854 mm	89 in 2261 mm	89 in 2261 mm	73 in 1854 mm	73 in 1854 mm	89 in 2261 mm	89 in 2261 mm	73 in 1854 mm	73 in 1854 mm
Depth (D)	62 in 1575 mm	62 in 1575 mm	62 in 1575 mm	62 in 1575 mm	62 in 1575 mm	62 in 1575 mm	62 in 1575 mm	62 in 1575 mm	62 in 1575 mm	62 in 1575 mm	62 in 1575 mm	62 in 1575 mm	62 in 1575 mm	62 in 1575 mm	62 in 1575 mm	62 in 1575 mm
Weight	761 lb 345 kg	708 lb 321 kg	711 lb 323 kg	658 lb 299 kg	585 lb 265 kg	532 lb 241 kg	535 lb 243 kg	482 lb 219 kg	683 lb 310 kg	630 lb 286 kg	633 lb 287 kg	580 lb 263 kg	582 lb 264 kg	529 lb 240 kg	532 lb 241 kg	479 lb 217 kg



Because of continuing technological advancements, specifications, models and options are subject to change without notice.

SmartWeight Touch, SmartWeight, BullsEye, HammerHead, SpeedClamp, CenteringCheck, TPMSpecs and TruWeight are registered trademarks of Hunter Engineering Company.

**HUNTER**  
Engineering Company

www.hunter.com