

Hunter Highlights

News and Trends of the Automotive Service Industry

Review of New Products and Services

GSP9200 LCD Wheel Balancer Cuts Wheel Weight and Labor Costs

Hunter's GSP9200 LCD Wheel Balancer offers a new combination of mid-range and premium balancer features that provide an optimal balance, speed service time and reduce balancing costs. Equipped with Hunter's SmartWeight™

balancing feature, the GSP9200 LCD can reduce wheel weight costs by 30% - 40% and provide further savings by reducing the time and labor it takes to balance most wheels – all without sacrificing balance or ride quality!

Weight Savings	
Totals	Spins: 2438
Non-SmartWt:	6120.00 oz.
SmartWt:	4180.50 oz.
Savings:	1939.50 oz.
	31.7%
1 Weight Req'd:	1296
No Weights Req'd:	41

SmartWeight Balancing Technology
 The GSP9200 software makes it easy to track wheel weight savings. This shop saved 1,939.50 oz. (31.7%) of weight. Fifty-three percent of the wheels were dynamically balanced using only one weight.



BDC Adhesive Weight Placement Laser
 This servo-activated laser line marks the "bottom-dead-center" weight placement position automatically.



AutoClamp Feature
 This GSP9200 option positions the wheel on the spindle and tightens it into position automatically.



The OCL430MD trolley provides an extended low-to-high working range required for servicing vehicles when a lift rack is not available or practical.

OCL430MD Hub-Mount Rotor Lathe Handles Up to Medium-Duty Trucks

The Hunter OCL430MD on-vehicle rotor lathe is the ideal solution for shops that service medium-duty trucks and commercial vehicles. Offering all of the speed and productivity features of the Hunter OCL400 brake lathe, the OCL430MD adds heavy-duty design features, components, capacity and power. Hunter exclusive OCL lathe features such as ACT Anti-Chatter Technology, Pro-Comp® Computerized Compensation and ServoDrive™ Variable Drive System are standard on the OCL430MD. A full selection of medium-duty OE-spec. hub and rotor adaptors and accessories is available.

WinAlign 9.0 Software Drives Faster Service, Greater Profitability

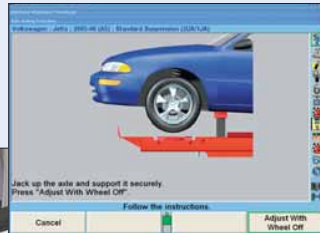


The newest version of Hunter's award-winning WinAlign® alignment software supports new features and capabilities that can increase profitability by speeding alignment service and addressing new OEM service requirements.

Wheel-Off Adjustment Feature

Easier and more accurate adjustments are possible with the wheel out of the way on more than 30% of vehicles in production.

JackDetect™ Feature saves adjustment time by automatically triggering the "jack up" mode when the vehicle is raised.



When the vehicle is raised for Wheel-Off Adjustment, the JackDetect feature automatically switches to the "jack up" adjustment mode. Wheel-Off Adjustment Adaptor Kit options mount sensors or DSP600 targets directly to the hub.

Live Ride Adjustment Feature for Hunter DSP600 Sensors

This exclusive, patented feature lets technicians use live measurements to adjust, jounce and confirm vehicle ride height in as little as one trip around the vehicle! When used with WinAlign Tuner™ software, it is an ideal tool for modified vehicle service. It also enhances Hunter's patented Suspension Body Dimension Audit feature for checking vehicle alignability.



When the Live Ride Height body-mounted targets are installed, measurements are instantly displayed on the aligner screen in a dynamic 3-D model.

Cordless Remote Indicators provide live measurements in a graphic display and allow the technician to switch adjustment points to complete the alignment without having to return to the aligner console. The "Plus" model allows the transmission of additional vehicle measurements to the aligner console using short-cut controls and displays for advanced alignment system capabilities.



Standard and premium "Plus" Cordless Remote Indicator models are available. The Plus model (shown far left) provides dedicated entry buttons for vehicle inspection measurements including frame angle, ride height, tire pressure, temperature and tread depth.

WinSI Inspection Lane Software Adds Service, Sales and Management Features



The next generation of WinSI software for Hunter automated brake, sideslip and suspension inspection systems introduces new capabilities for service, shop management and merchandising. Upgrade software is available for shops with Hunter PC-based Inspection Lane equipment already installed. The new features and capabilities include:

- Point and Click vehicle-specific inspection photos.
- Work Management features.
- Last Result Pass/Fail status display - a great customer merchandising tool.
- Stopping Distance Prediction and Pass/Fail Limit features for mass transit vehicles.

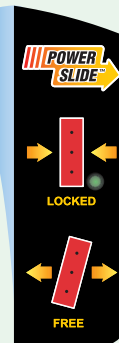
PowerSlide™ System Saves Technicians Time and Effort – Prevents Accidental Damage



The PowerSlide™ system option for Hunter RX-series lift racks eliminates trips a technician must take around the vehicle to complete an alignment. The system provides a button on the lift console to electronically lock and unlock front wheel turnplates and rear slipplates. An integrated turnplate bridge even further eliminates steps when using Hunter DSP600 camera-based sensors. In all, the system can reduce technician's trips around the vehicle from as many as eight to as little as three. When the vehicle is lowered, the PowerSlide system helps eliminate costly accidents by automatically locking the turnplates and slipplates.



An indicator light on the PowerSlide system control shows if the plates are locked or unlocked. PowerSlide turnplates are an optional component of the PowerSlide system.



DSP9200 Digital Signal Processor Wheel Balancer Makes Expert Service Faster and Easier

The Hunter DSP9200 is an economical, yet fully capable wheel balancer that combines conventional balancing methods with exclusive new features.

- ServoDrive™ programmable DC drive system offers the fastest possible balance service and automatically positions the wheel for weight placement.
- Automatic Double Dataset® Arms speed data entry.
- The Spindle-Lok® brake feature uses foot pedal control to lock the wheel in position when working.
- Split Spoke® and Split Weight® modes provide optimal split weight placement that limits the use of large weights and allows out-of-sight weight positioning.



Premium Hunter Heavy-Duty Aligner Services Passenger Cars to Class 8 Trucks

Hunter's premium 811T-Plus alignment system seamlessly interchanges between car and heavy-duty truck service. The system accommodates either electronic sensors or digital camera-based sensors, automatically recognizing the sensor type when switching from car to truck service. Premium productivity and profitability features include multi-media information and instruction for passenger cars and light trucks. Options include Hunter Online Internet-based information and management services for passenger cars or heavy-duty trucks and wireless in-shop Internet access capability.



All Hunter Series 811 aligner cabinet configurations and a combination of flat-panel display and standard monitors are available for the 811T-Plus.

Hunter Heavy-Duty Pit Jack Provides 35,200 Lbs. of Lifting Power



Hunter's Heavy-Duty Pit Jack is an integrated rolling system that offers speed, efficiency and exceptional lifting power when servicing heavy-duty trucks. It can service the entire length of the vehicle, depending on the pit configuration selected. The system is available for the Hunter PT Pit Rack and the PF Pit Rack with optional T-extension.

The jack uses air-powered/hydraulically-driven cylinders, adjustable from side-to-side, offering single- or dual-point jacking capability. Total lifting capacity is 35,200 lbs., or 17,600 lbs. per cylinder. Accessories and adaptors are available to meet a range of service and vehicle lifting requirements.

New Catalogs Ease Critical Accessory Choices



Hunter's newly released accessories catalogs for wheel alignment, lift racks, brake lathes, wheel balancers and tire changers list and illustrate accessories, accessory packages and kits designed to fit the widest range of vehicles and applications.

Hunter catalogs include:

- Form 5414T Alignment Accessories
- Form 5262T Lift Rack Accessories
- Form 3203T Wheel Balancer Accessories
- Form 3947T Tire Changer Accessories
- Form 4042T Brake Lathe Packages and Accessories

Hunter Highlights

A Publication of Hunter Engineering Company

11250 Hunter Drive
Bridgeton, MO 63044 U.S.A.
314-731-3020
<http://www.hunter.com>